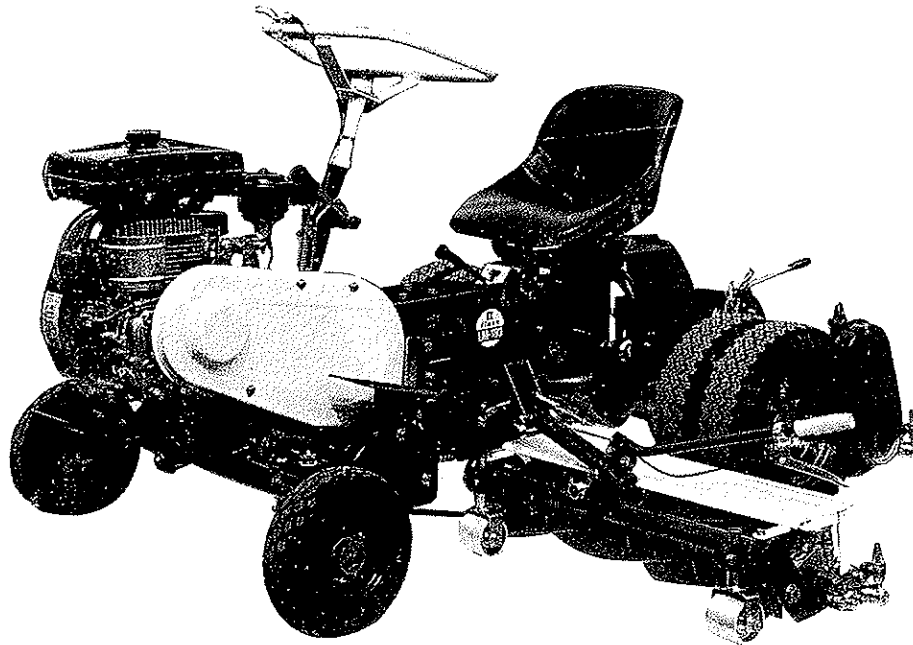


BARONNESS

LM180

TRIPLE MOWER

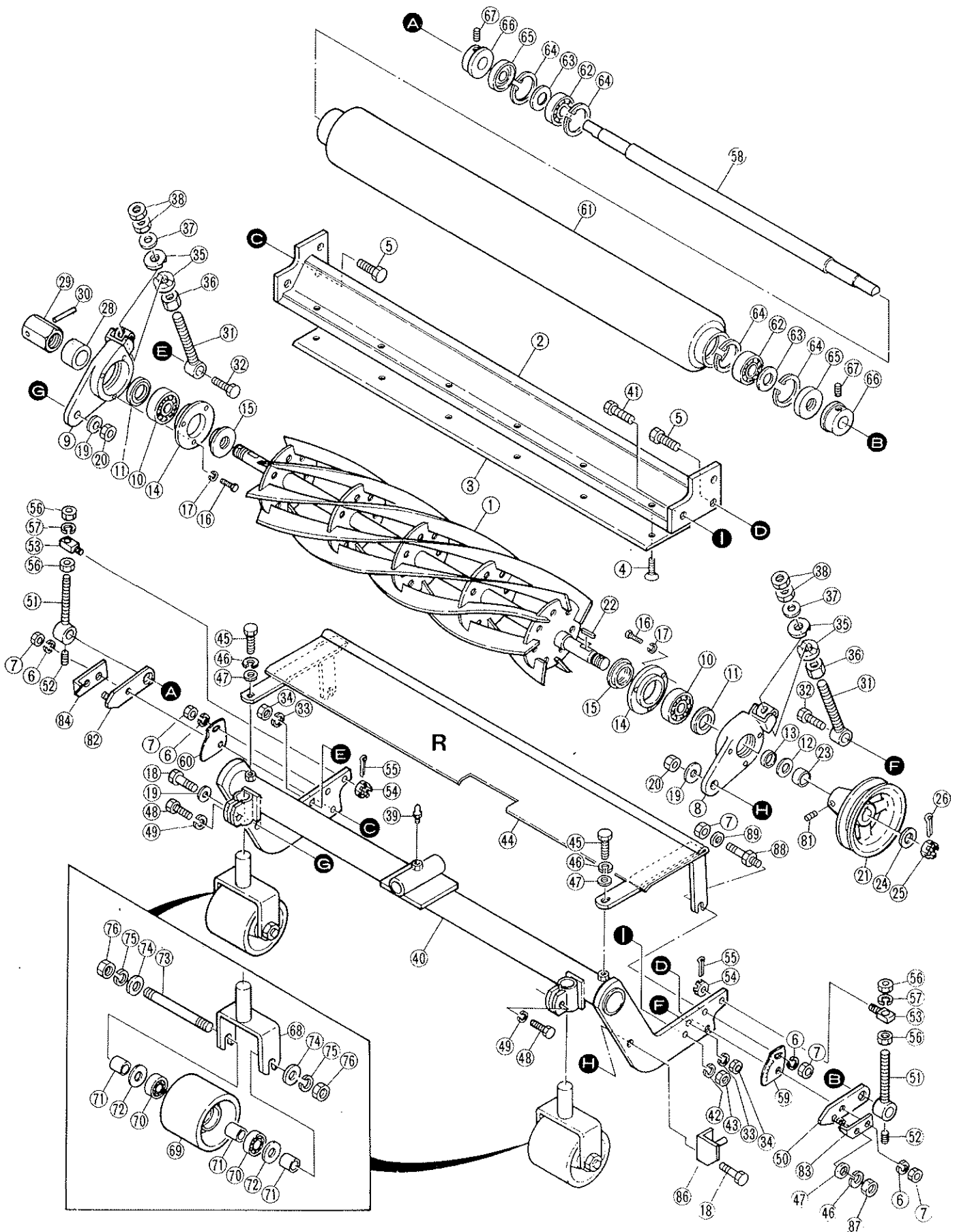


Saxon Industries. Everland Road, Hungerford, Berks. RG17 0DX Tel: 01488 689400 Fax: 01488 684317

Index

- Section A: Side cylinder units
- Section B: Rear cylinder unit
- Section C: Main chassis
- Section D: Intermediate shafts
- Section E: Rear mower lifting and seat
- Section F: Tension pulleys
- Section G: Steering & front wheels
- Section H: Rear wheels & transmission
- Section I: Engine & guards
- Section K: Handbrake
- Section L: Transmission outer & brake
- Section M: Transmission internal

A



Section A

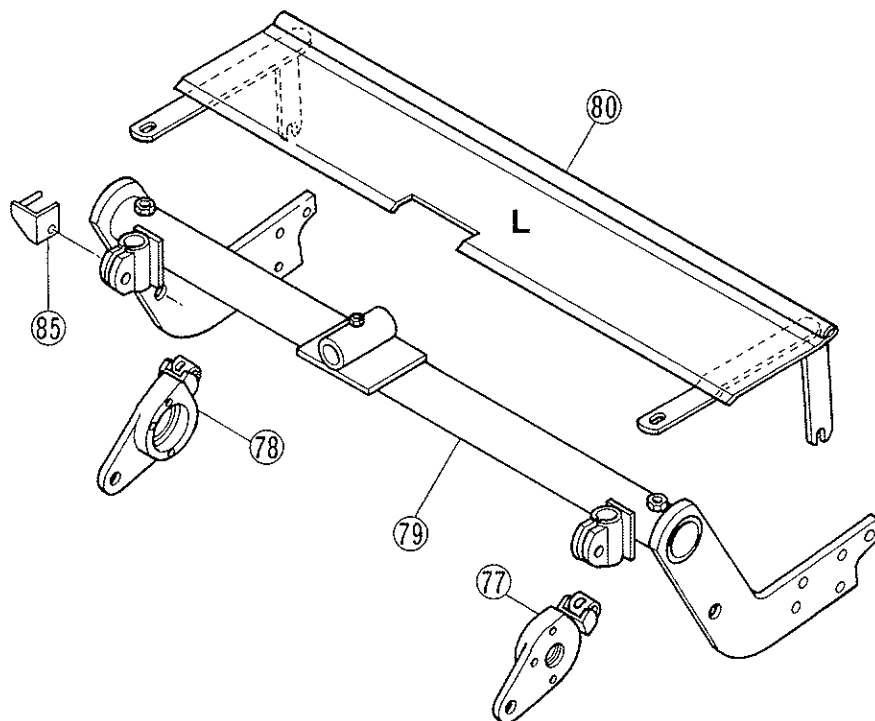
Position	Part No	Description	Qty
1	A-1	7 Blade cylinder	2
	A-1A	5 Blade cylinder	2
2	LM180A-0102AR	Blade holder	2
3	K2510000030	Bottom blade	2
4	K0071000092P	Blade screw M10x20	12
5	K0000100352	Bolt M10x35	4
6	K0200100002	M10 Spring washer	8
7	K0100100002	Nut M10 full	12
8	LM180A-0108Z2	Reel bracket LH (A)	1
9	LM180A-0111Z2	Reel bracket RH (B)	1
10	6304ZZ	Bearing	4
11	K0860000050	Dust Seal	4
12	K5030520400	Washer	2
13	K6212000162	Spacer	2
14	A-14	Housing cover	4
15	K0830000020	Seal 25.42.10F	4
16	K0000060152	Bolt M6x15	12
17	K0200060002	M6 Spring washer	12
18	LM180A-0120Z2	Bolt	4
19	K5073215302	Washer M14	6
20	K0145140002	Nut M14 (P1.5)	4
21	K242000001D	Pulley	2
22	K0550000050	Key 5x5x29.5 special	2
23	K6212000162	Spacer	2
24	K5073220402	Washer	2
25	K0170000012	M20 (P1.5) castalated	2
26	K0300032362	Split pin 3x35	2
28	A-28	Water prevention cap	2
29	LM180A-1101C2	Collar	2
30	K0320030251	Pin 3x25	2
31	K6511000092	Height adjuster	4
32	K0000100352	Bolt M10x35	4
33	K0200100002	M10 Spring washer	4
34	K0100100002	Nut M10 full	4
35	K6500000102	Clamp washer	8

Section A

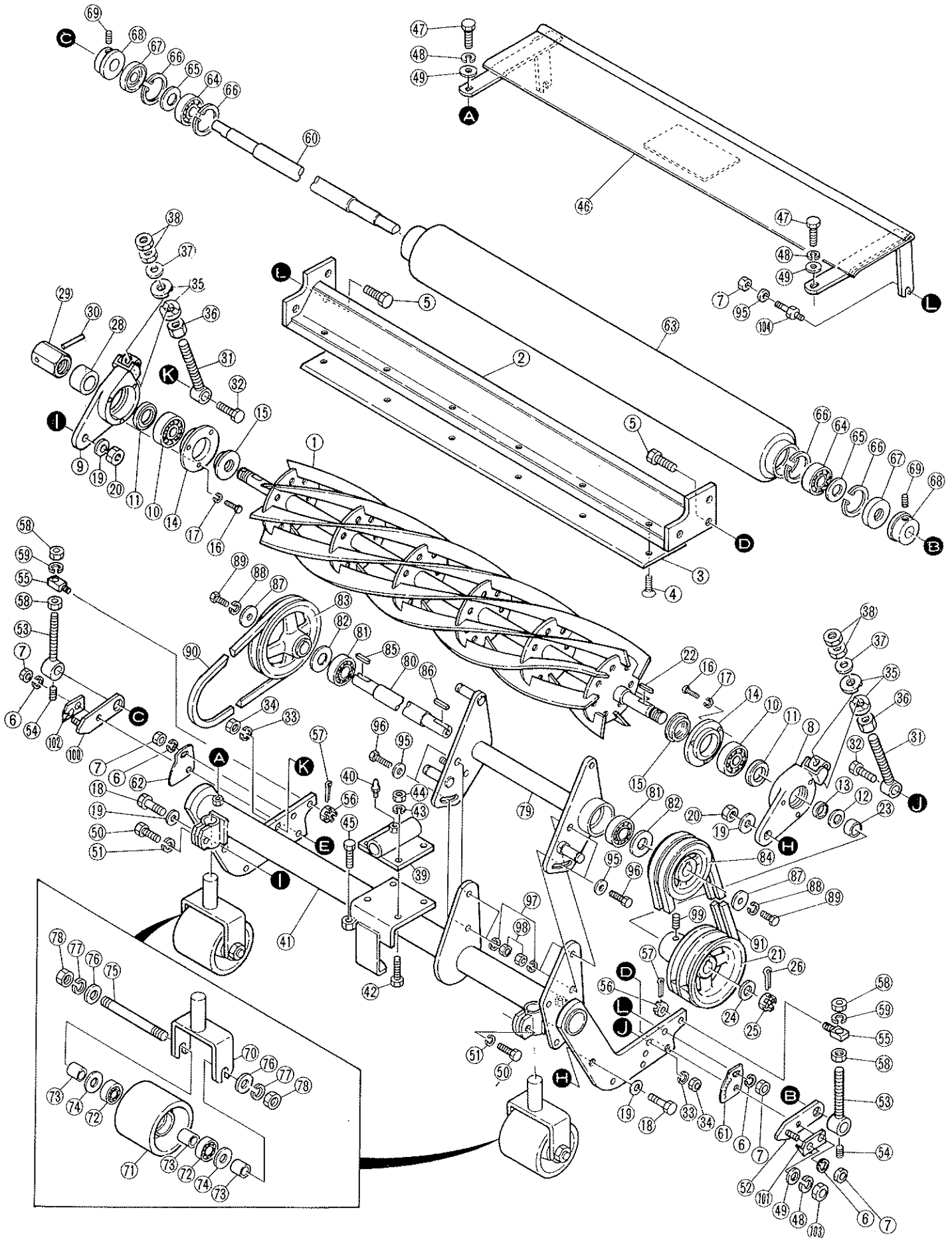
Position	Part No	Description	Qty
36	LM180A-0135Z	Nut M10 P1 fine	4
37	K5051010200	Washer	4
38	K0106100002	Nut M10 (P1)	8
39	K1440000010	M6 Grease nipple	2
40	LM180A-0141AR	Mower Frame	1
41	K0000120352	Bolt M12x35	4
42	K0200120002	M12 Spring washer	4
43	K0100120002	Nut M12 full	4
44	LM180B-0143ZR	Cylinder guard	1
45	K0007080202	Bolt M8x20	4
46	K0213080001	M8 Spring washer	8
47	K5000080002	M8 Flat washer	8
48	K0000100252	Bolt M10x30	4
49	K0200100002	M10 Spring washer	4
50	LM180B-0150Z2	Indicator	1
51	LM180B-0154Z2	Height adjuster	4
52	K0000100252	Bolt M10x30	4
53	LM180B-0156Z2	Fixing screw	4
54	K0124120002	M12 Castalated nut	4
55	K0300032252	3x25 Split pin	4
56	K0100120002	M12 Full nut	8
57	K0200120002	M12 Spring washer	4
58	LM180B-0159Z0	Roller shaft	2
59	LM180B-0160Z0	Graduation plate	2
60	LM180B-0162Z0	Graduation plate	2
61	LM180A-0161A2	Roller tube	2
62	6203ZZ	Bearing	4
63	K5030517400	Dust plate	4
64	K0402040001	R40 Circlip	8
65	K0830000040	Seal 17.40.10	4
66	LM180A-0166Z2	Dust cover	4
67	K0023060101	M6x10 Grub screw	4
68	LM180A-1204Z2	Roller bracket	4
69	K6809000020	Alloy scalp roller	4
70	6201ZZ	Bearing	8
71	K6211000052	Spacer	12

Section A

Position	Part No	Description	Qty
72	K5030512300	Washer	8
73	K0070000032	Roller shaft	4
74	K5000120002	M12 Flat washer	8
75	K0200120002	M12 Spring washer	8
76	K0100120002	M12 Full nut	8
77	LM180A-0109Z2	Reel bracket LH (B)	1
78	LM180A-0110Z2	Reel bracket RH (A)	1
79	LM180A-0140AR	Mower frame	1
80	LM180BS0179Z0	Cylinder guard	1
81	K0023080081	M8x8 Grub screw	2
82	LM180B-0150Z2	Indicator	2
83	LM180A-0251Z2	Indicator plate	2
84	LM180A-0252Z2	Indicator plate	2
85	LM180A-1015A2	Scraper	1
86	LM180A-1023A2	Scraper	1
87	K0100080002P	M8 Nut	4
88	LM180A-0147Z2	Stud	4
89	K5000100002	M10 Washer	4



B



Section B

Position	Part No	Description	Qty
1	K28180205BR	7 Blade cylinder	1
1	B-1A	5 Blade cylinder	1
2	LM180A-0202AR	Blade carrier	1
3	K2510000020	Bottom Blade	1
4	K0071000092P	M10x20 C/S Screw	7
5	K0000100352	M10x35 Bolt	2
6	K0200100002	M10 Spring washer	4
7	K0100100002P	M10 Full nut	6
8	LM180A-0108Z2	Reel bracket LH (A)	1
9	LM180A-0111Z2	Reel bracket RH (B)	1
10	6304ZZ	Bearing	2
11	K0860000050	Dust seal	2
12	K5030520400	Washer	1
13	K6212000162	Spacer	1
14	A-14	Housing cover	2
15	K0830000020	Seal 25.42.10F	2
16	K0000060152	M6x15 Bolt	6
17	K0200060002	M6 Spring washer	6
18	LM180A-0120Z2	Bolt	2
19	K5073215302	M14 Washer	4
20	K0145140002	M14 (P1.5) Nut	2
21	LM180A-0225BD	Reel pulley	1
22	K0550000050	5x5x29.5 Key	1
23	K6212000162	Spacer	1
24	K5073220402	Washer	1
25	K0170000012	M20 (1.5) Castalated nut	1
26	K0300032362	3x35 Split pin	1
28	A-28	Water prvention cap	1
29	LM180A-1101C2	Collar	1
30	K0320030251	3x25 pin	1
31	K6511000092	Height adjuster	2
32	K0000100352	M10x35 Bolt	2
33	K0200100002	M10 Spring washer	2
34	K0100100002P	M10 Full nut	2
35	K6500000102	Clamp washer	4

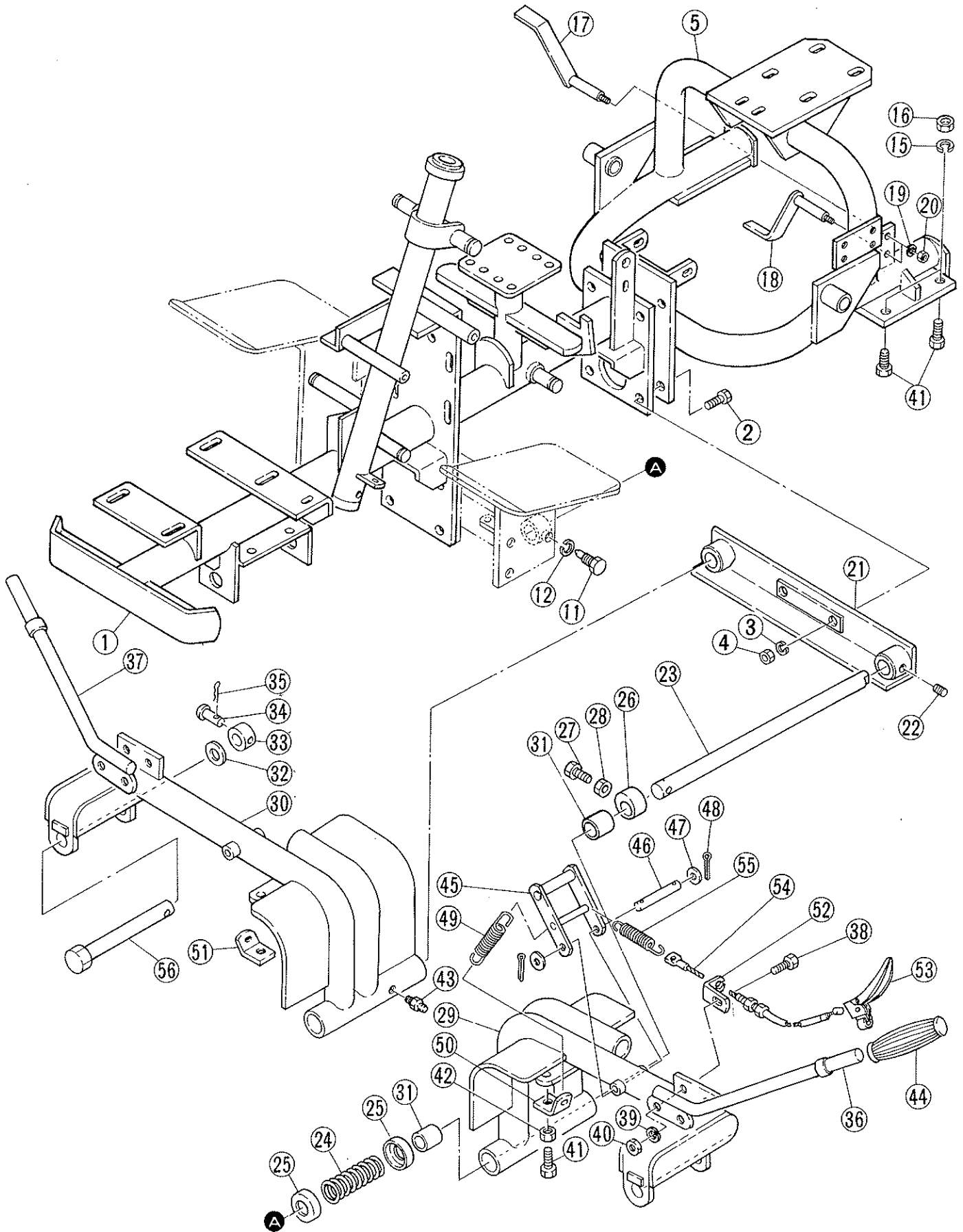
Section B

Position	Part No	Description	Qty
36	LM180A-0135Z2	M10 P1 H12 Nut	2
37	K5051010200	M10 Washer	4
38	K0106100002	M10 (P1) Nut	4
39	B-39	Mower Bracket	1
40	K1440000010	M6 Grease nipple	1
41	LM180A-0241BR	Mower frame	1
42	K0000100252	M10x30 Bolt	4
43	K0200100002	M10 Spring washer	4
44	K0100100002P	M10 Full nut	4
45	K0000120402	M12x40 Bolt	1
46	LM180BS0279Z0	Cylinder guard	1
47	K0007080202	M8x20 Bolt	2
48	K0213080001	M8 Spring washer	4
49	K5000080002	M8 Washer	4
50	K0000100252	M10x30 Bolt	2
51	K0200100002	M10 Spring washer	2
52	LM180B-0150Z2	Indicator	1
53	LM180B-0154Z2	Height adjuster	2
54	K0000100252	M10x30 Bolt	2
55	LM180B-0156Z2	Fixing screw	2
56	K0124120002	M12 Castalated nut	2
57	K0300032252	3.2x25 Split pin	2
58	K0100120002	M12 Full nut	6
59	K0200120002	M12 Spring washer	4
60	LM180B-0259Z0	Roller shaft	1
61	LM180B-0160Z0	Graduation plate	1
62	LM180B-0162Z0	Graduation plate	1
63	LM180A-0261A2	Roller tube	1
64	6203ZZ	Bearing	2
65	K5030517400	Dust plate	2
66	K0402040001	R40 Circlip	4
67	K0830000040	Seal 17.40.10	2
68	LM180A-0166Z2	Dust prevention cover	2
69	K0023060101	M6x10 Grub screw	2
70	LM180A-1204Z2	Roller bracket	2
71	K6809000020	Alloy scalp roller	2

Section B

Position	Part No	Description	Qty
72	6201ZZ	Bearing	4
73	K6211000052	Spacer	6
74	K5030512300	Washer	4
75	K0070000032	Roller shaft	2
76	K5000120002	M12 Washer	4
77	K0200120002	M12 Spring washer	4
78	K0100120002	M12 Full nut	4
79	LM180A-0296AR	Layshaft housing	1
80	LM180A-0272Z0	Layshaft	1
81	6204ZZ	Bearing	2
82	K5030520430	Dust plate	2
83	LM180A-0275Z2	Pulley	1
84	LM180A-0276ZD	Double pulley	1
85	K0500505250	5x5x25 Key	1
86	K0500505250	5x5x25 Key	1
87	K5073208322	Washer	2
88	K0213080001	M8 Spring washer	2
89	K0000080202	M8x25 Bolt	2
90	LB56	Belt	1
91	LA29	Belt	2
95	K5000080002	M10 Washer	4
96	K0000100252	M10x30 Bolt	4
97	K0200100002	M10 Spring washer	4
98	K0100100002P	M10 Full nut	4
99	K0023080081	M8x8 Grub screw	1
100	LM180A-0149Z2	Indicator	1
101	LM180A-0251Z2	Indicator plate	1
102	LM180A-0252Z2	Indicator plate	1
103	K0100080002	M8 Full nut	2
104	LM180A-0147Z2	Stud	2

C



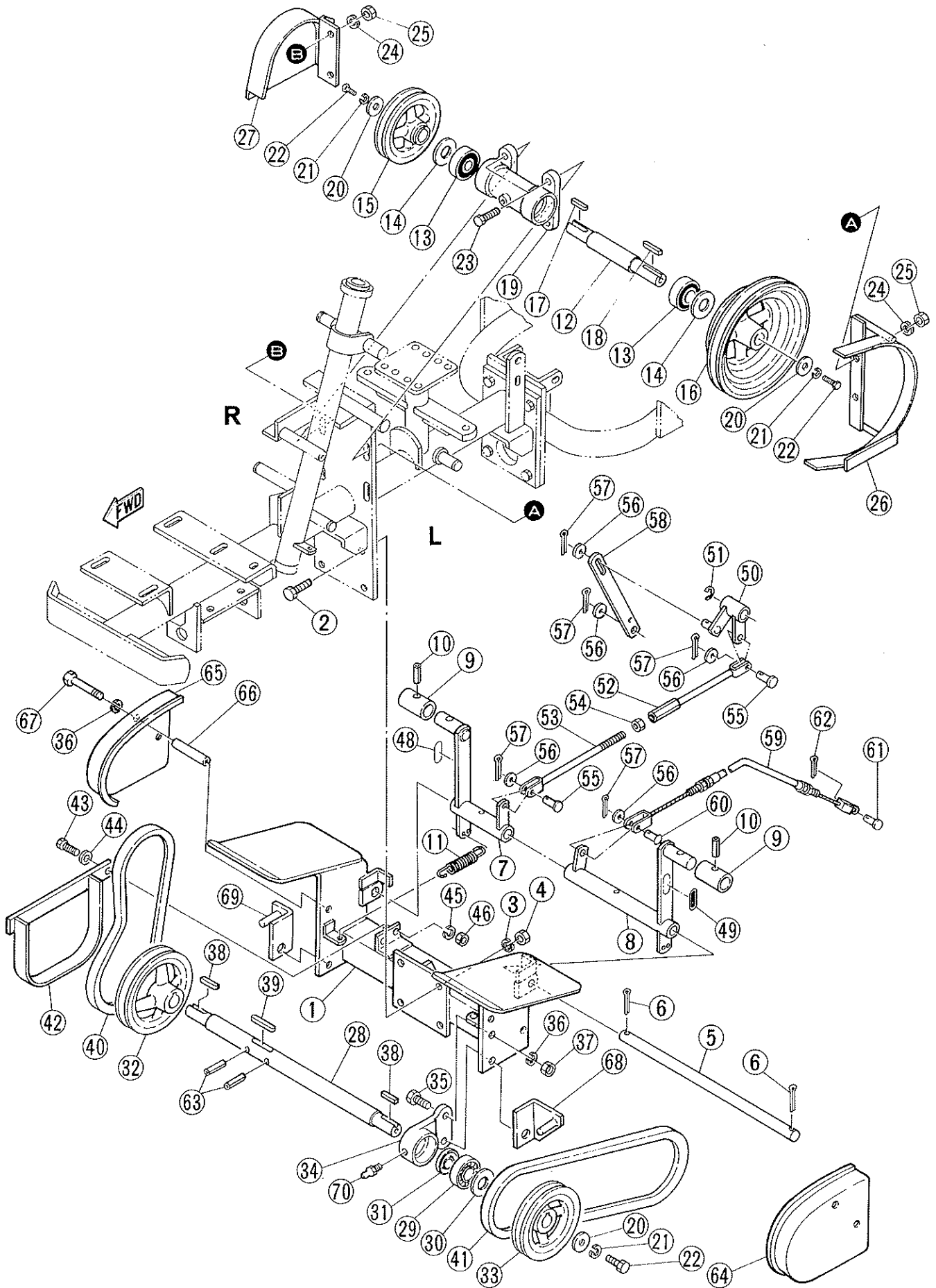
Section C

Position	Part No	Description	Qty
1	C-1	Main Frame	1
2	K0000120452	M12x45 Bolt	4
3	K0200120002	M12 Spring washer	4
4	K0100120002	M12 Full nut	4
5	C-5	Rear frame	1
11	LM180A-0308Z2	Bolt	2
12	K0200100002	M10 Spring washer	2
15	K0200120002	M12 Spring washer	4
16	K0100120002	M12 Full nut	4
17	LM180A-0450Z2	Belt guide	1
18	LM180A-0451Z2	Belt guide	1
19	K0213080001	M8 Spring washer	2
20	K0100080002P	M8 Nut	2
21	LM180A-0305AD	Frame	1
22	K0000100202	M10x12 Bolt	2
23	LM180A-0343Z2	Mower support shaft	2
24	K1000000298	Spring	2
25	LM180A-0345Z2	Cup	4
26	K6218000032	Spacer	2
27	K0000100252	M10x30 Bolt	2
28	K0100100002	M10 Full nut	2
29	LM180B-0347AD	Lift frame LH	1
30	LM180B-0348ZD	Lift frame RH	1
31	K6000000320	Bush 22.3 3025	4
32	K5051020280	Thrust washer	2
33	LM180A-0351A2	Collar	2
34	K6040080402	Round head pin 8x40	2
35	K0330800008	R clip	2
36	LM180A-0358ZD	Lift arm LH	1
37	LM180A-0359ZD	Lift arm RH	1
38	K0000100202	M10x20 Bolt	4
39	K0200100002	M10 Spring washer	4
40	K0100100002P	M10 Full nut	4
41	K0000120302	M12x30 Bolt	6
42	K0100120002	M12 Full nut	2

Section C

Position	Part No	Description	Qty
43	K1440000010	M6 Grease nipple	2
44	K1300000080	Handle grip	2
45	LM180A-0374BD	Lock arm	2
46	K6151000062	Shaft	2
47	K5000100002	M10 Washer	4
48	K0300032202	3.2x20 Split pin	4
49	K1030000038	Spring	2
50	LM180A-0379Z2	Bracket	1
51	LM180A-0385Z2	Bracket	1
52	LM180B-0380Z2	Stop unit	2
53	K1211111024	Release lever	2
54	K1170051200	Release cable	2
55	K1030000042	Spring	2
56	LM180B-0384Z2	Pin	2

D



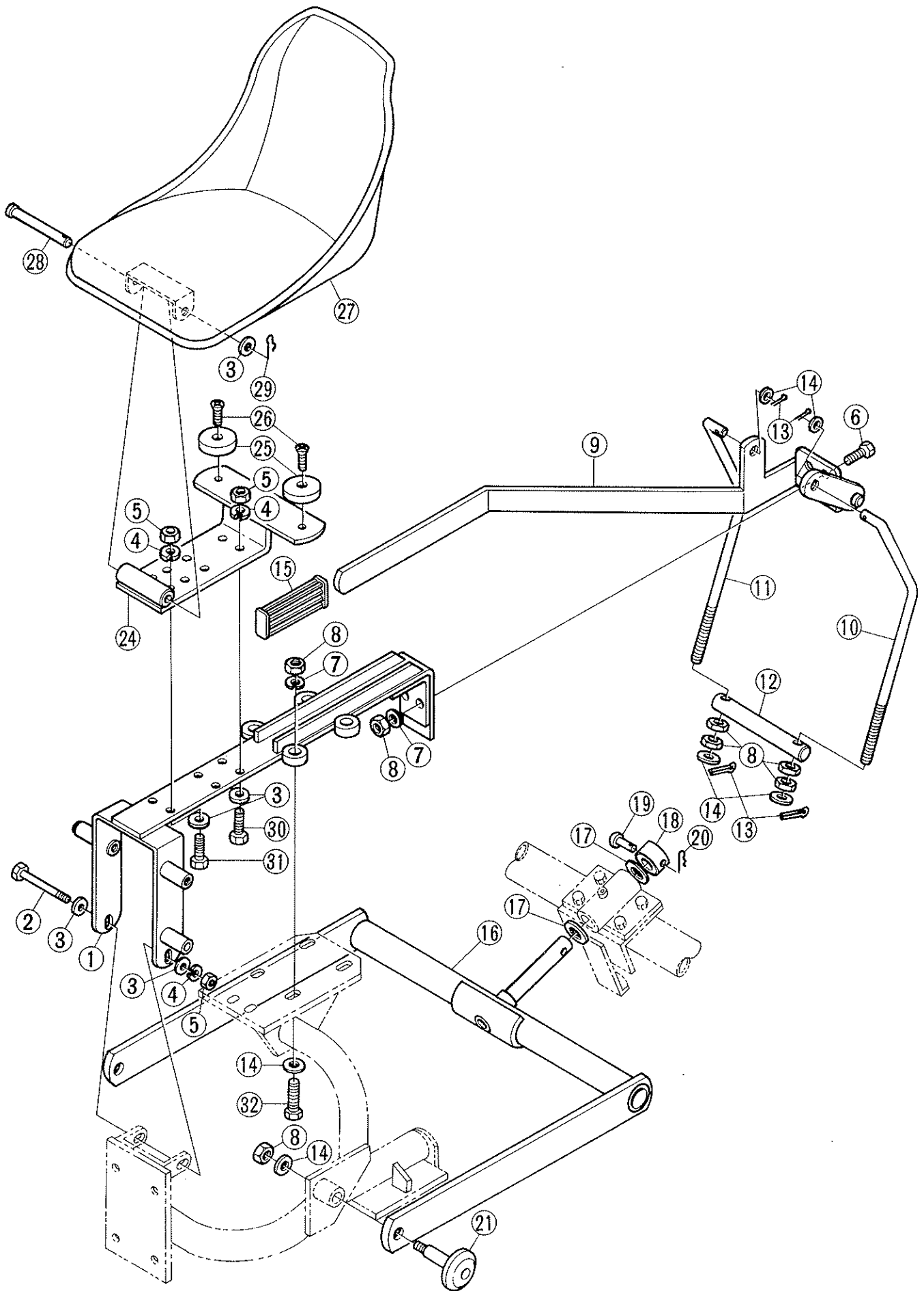
Section D

Position	Part No	Description	Qty
1	LM180A-0303AD	Front frame	1
2	K0000120302	M12x30 Bolt	4
3	K0200120002	M12 Spring washer	4
4	K0100120002	M12 Full nut	4
5	LM180A-0306A2	Brake shaft	1
6	K0300032252	3x25 Split pin	2
7	D-7	Brake pedal	1
8	D-8	Diff lock pedal	1
9	D-9	Pedal rubber	2
10	D-10	5x25 Pin	2
11	K1030000048	Spring	2
12	LM180A-0312A0	Middle shaft	1
13	6204ZZ	Bearing	2
14	K5030520430	Dust plate	2
15	K242000002D	Pulley	1
16	LM180A-0316Z2	Pulley	1
17	K0500505250	5x5x27.5 Key	1
18	K0500505350	5x5x38.5 Key	1
19	LM180B-0319ZD	Shaft housing	1
20	K5073208322	Washer	4
21	K0213080001	M8 Spring washer	4
22	K0000080202	M8x25 Bolt	4
23	K0000100402	M10x40 Bolt	4
24	K0200100002	M10 Spring washer	4
25	K0100100002P	M10 Full nut	4
26	LM180B-0335Z2	Belt retainer	1
27	D-27	Belt stopper	1
28	LM180A-0325A0	Lower shaft	1
29	6204ZZ	Bearing	2
30	K5030520430	Dust plate	2
31	K0812242110	Seal MHS 224211	2
32	LM180A-0328A2	Pulley	1
33	K242000002D	Pulley	2
34	LM180B-0330Z2	Bearing housing	2
35	K0000100352	M10x35 Bolt	4

Section D

Position	Part No	Description	Qty
36	K0200100002	M10 Spring washer	8
37	K0100100002P	M10 Full nut	4
38	K0500505250	5x5x27.5 Key	2
39	K0500505350	5x5x38.5 Key	1
40	LB31	Belt	1
41	LB41	Belt	2
42	LM180B-0337ZD	Belt stopper	1
43	K0007080202	M8x20 Bolt	2
44	K5000080002	M8 washer	2
45	K0213080001	M8 Spring washer	2
46	K0100080002P	M8 Nut	2
47	D-47	Non slip	2
48	LM180A-0370Z0	Decal	1
49	LM180A-0371Z0	Decal	1
50	LM180A-0425A2	Joint	1
51	K0400012002	E ring E12	1
52	D-52	Brake rod rear	1
53	D-53	Brake rod front	1
54	K0100080002P	M8 Nut	1
55	K6030080172	8x17 Pin	2
56	K5000080002	M8 washer	5
57	K0300025162	2.5x16 Split pin	5
58	LM180A-0430A2	Connecting plate	1
59	K1190069000	Diff cable	1
60	K6040080222	Round head pin 8x22	1
61	K6030050152	5x15 Pin	1
62	K0300020162	2x16 Split pin	1
63	D-63	5x30 Spring pin	2
64	LM180AS2401	Pulley cover LH	1
65	LM180A-1022AD	Pulley cover	1
66	LM180A-1020A2	Spacer	4
67	K0003100852	M10x85 Bolt	4
68	LM180A-1024A2	Scraper bracket	1
69	LM180A-1024A2	Scraper bracket	1
70	K1440000010	M6 Grease nipple	2

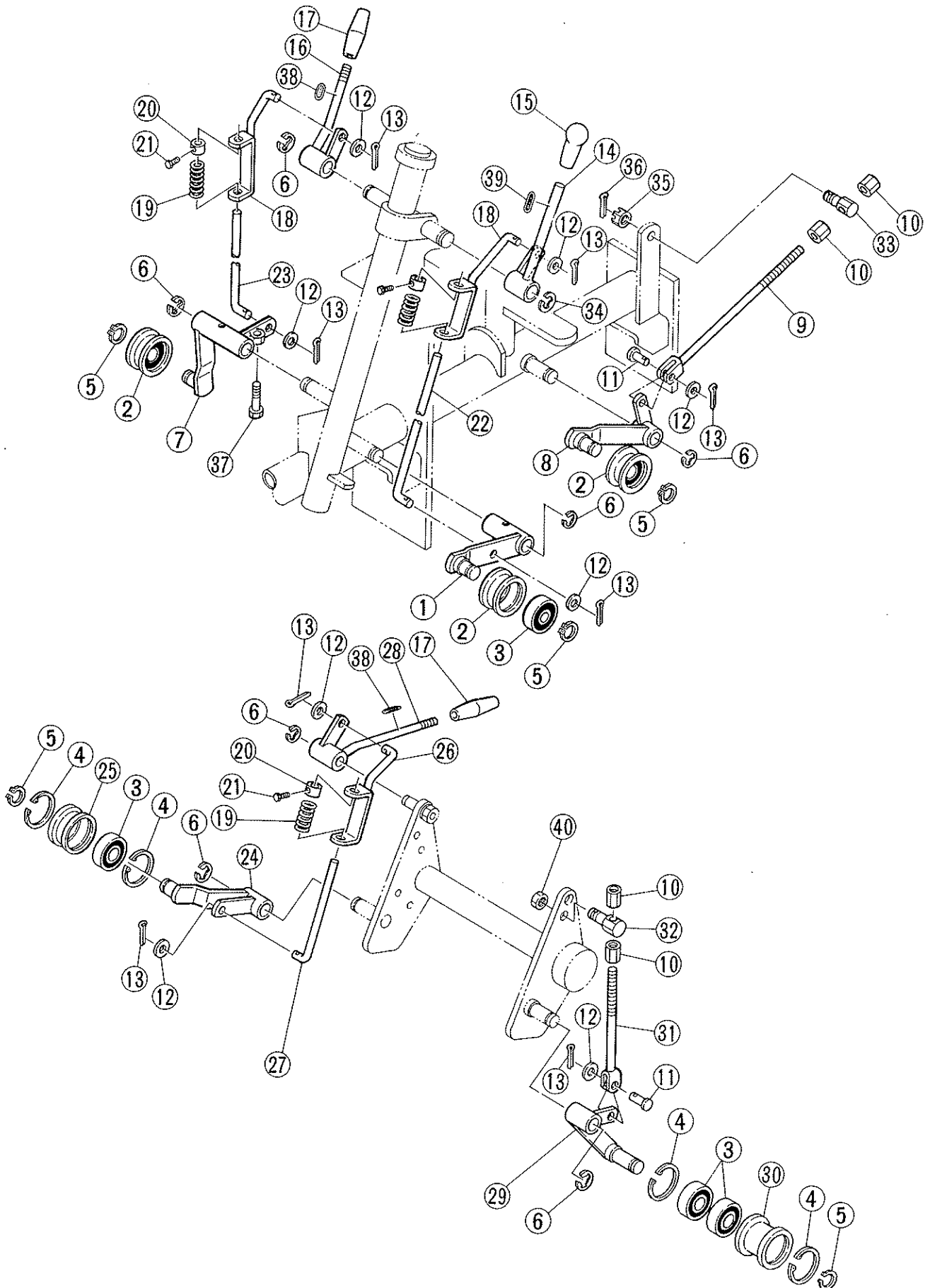
E



Section E

Position	Part No	Description	Qty
1	E-1	Frame	1
2	K0003101302	M10x130 Bolt	1
3	K5000100002	M10 Washer	7
4	K0200100002	M10 Spring washer	5
5	K0100100002P	M10 Full nut	5
6	K0000120402	M12x40 Bolt	2
7	K0200120002	M12 Spring washer	6
8	K0100120002	M12 Full nut	12
9	E-9	Lift arm	1
10	LM180B-0409A2	Lift rod LH	1
11	LM180B-0411A2	Lift rod RH	1
12	LM180A-0410Z2	Shaft	1
13	K0331300002	4x30 Split pin	4
14	K5000120002	M12 Washer	10
15	K1300000090	Grip	1
16	LM180B-0461ZD	Lift frame	1
17	E-17	Thrust washer	2
18	LM180A-0351A2	Collar	1
19	K6040080402	M8x40 Round head pin	1
20	K0330800008	R clip	1
21	E-21	Special bolt	2
24	LM180A-0470ZD	Seat frame	1
25	K1701000040	Mounting	2
26	K0041060162	Screw	2
27	TRIPLE SEAT	Seat	1
28	K1701000022	Pin	1
29	K1701000010	R clip	1
30	K0000100402	M10x40 Bolt	2
31	K0000100252	M10x30 Bolt	2
32	K0000120452	M12x45 Bolt	4

F



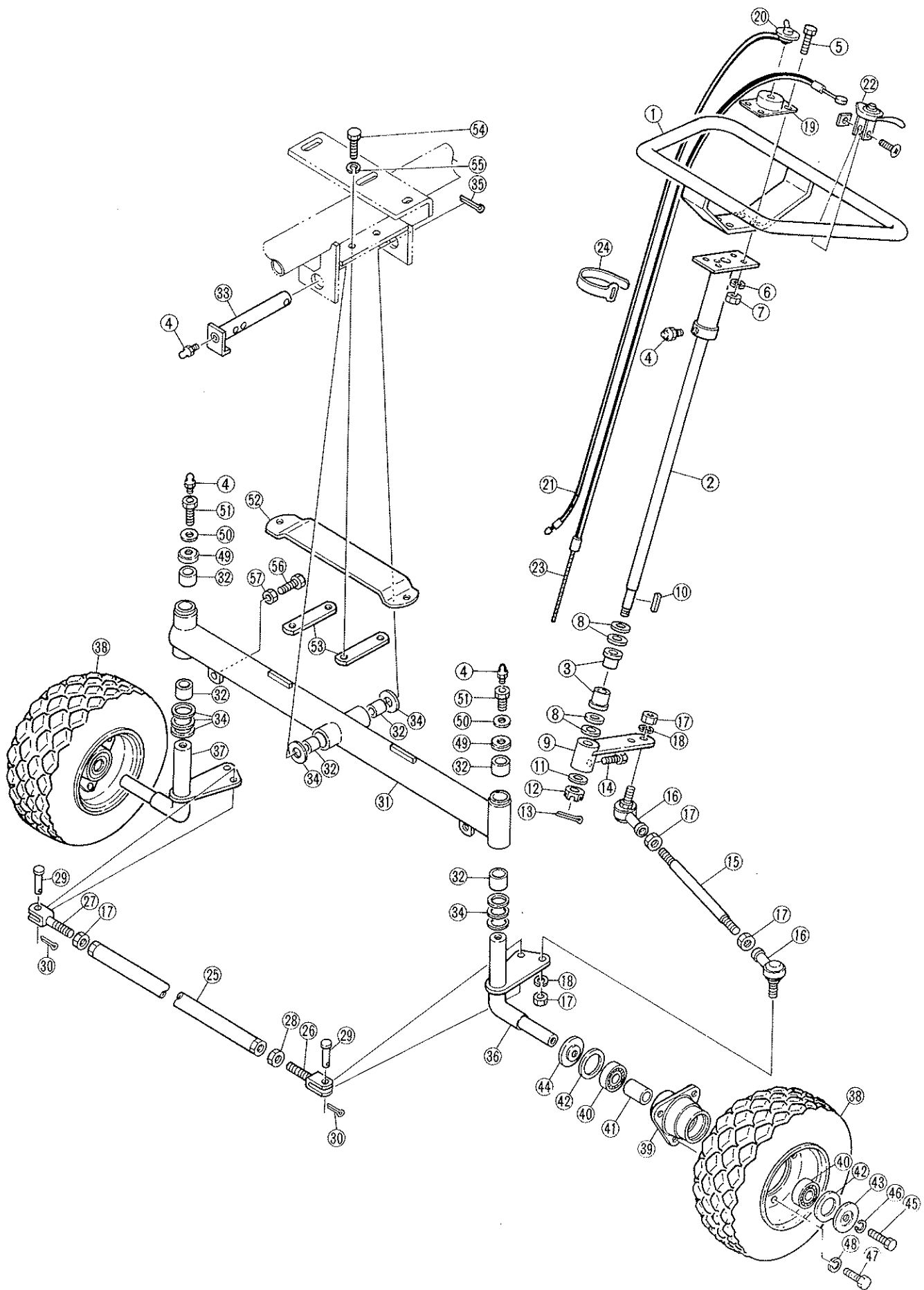
Section F

Position	Part No	Description	Qty
1	LM180B-0501Z2	Tension lever A	1
2	K2471180462	Tension pulley	3
3	6203 2RS	Bearing	6
4	K0402040001	R40 Retaining ring	4
5	K0401017001	S17 Stop ring	5
6	K0400012002	E Ring	7
7	LM180B-0507A2	Tension lever B	1
8	LM180B-0508Z2	Tension lever C	1
9	LM180B-0509Z2	Belt tension shaft	1
10	K0160000352	M8 Tall nut	4
11	K6030080172	8x17 Pin	2
12	K5000080002	M8 Washer	8
13	K0300025162	2.5x16 Split pin	8
14	LM180B-0513Z2	Clutch lever	1
15	K1300000040	Black grip	1
16	LM180B-0515Z2	Clutch lever	1
17	K1300000050	Red grip	2
18	LM180B-0522Z2	Bracket	2
19	K1000000042	Spring	3
20	K6218000022	Collar	3
21	K0000080152	M8x15 Tap bolt	3
22	LM180A-0526Z2	Rod	1
23	LM180A-0527Z2	Rod	1
24	LM180B-0529Z2	Tension lever D	1
25	K2471220502	Idler pulley	1
26	F-26	Rod tension link	1
27	F-27	Tension rod rear	1
28	F-28	Clutch lever rear	1
29	LM180B-0534Z2	Tension lever E	1
30	K2471300502	Idler pulley	1
31	LM180A-0536Z2	Tension shaft	1
32	LM180A-0537B2	Shaft	1
33	K6084000012	Shaft	1
34	K0400012002	E Ring	1
35	K0124120002	M12 Castalated nut	1

Section F

Position	Part No	Description	Qty
36	K0300025162	2.5x16 Split pin	1
37	F-37	M8x60 Bolt	1
38	K4203000010	Decal	1
39	LM180A-0544Z0	Decal	1
40	K0100120002	M12 Full nut	1

G



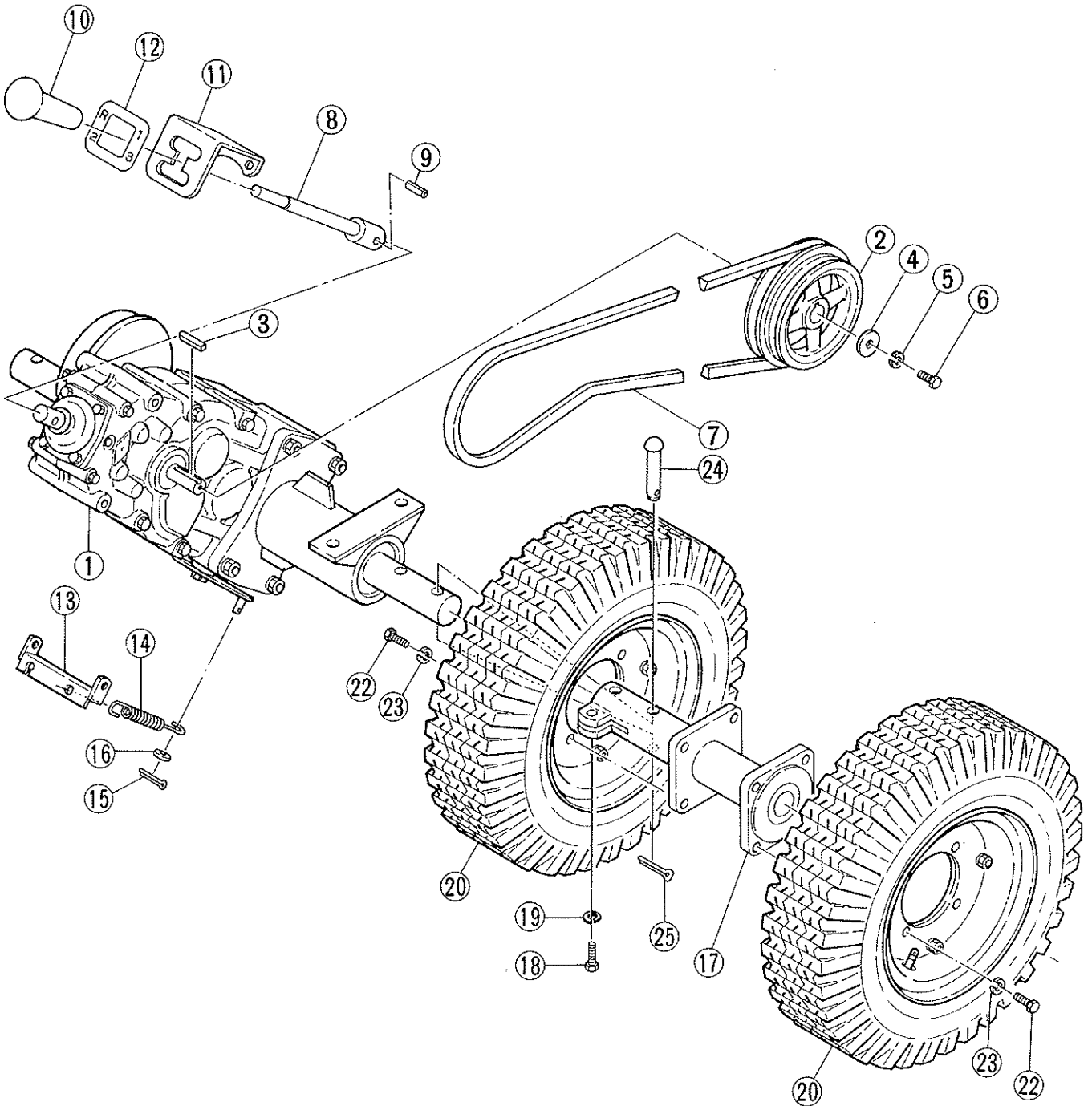
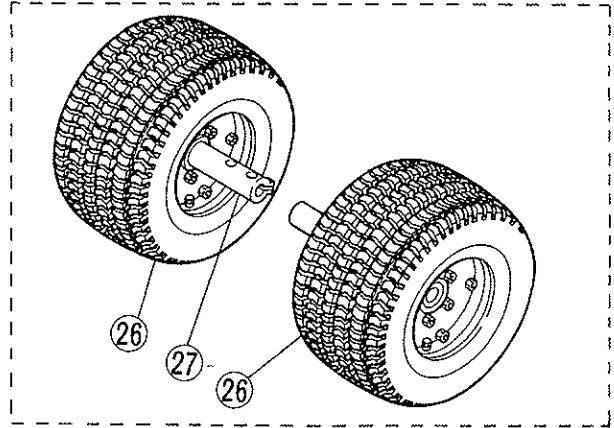
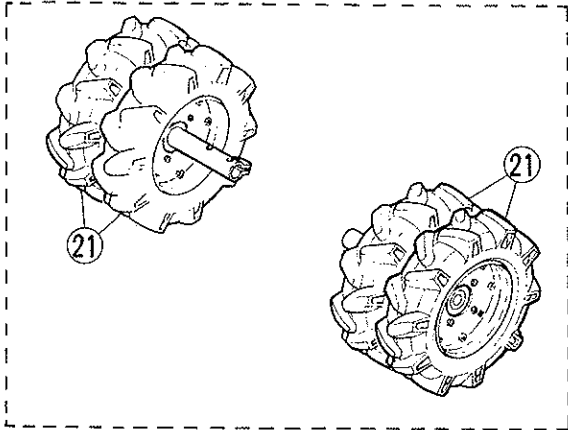
Section G

Position	Part No	Description	Qty
1	LM180A-0701ZD	Steering handle	1
2	LM180A-0702CD	Steering shaft	1
3	K6010000080	17.3 Bush	2
4	K1440000010	Grease nipple	4
5	K0000060203	M6x20 Bolt	4
6	K0200060002	M6 Spring washer	4
7	G-7	M6 Full nut	4
8	K5051017300	Washer 1C5191P 1730	4
9	LM180A-0706A2	Steering arm	1
10	G-10	Key 4x4x35	1
11	G-11	Washer	1
12	K0124120002	M12 Castalated nut	1
13	K0300025162	Split pin 2.5 x 16	1
14	G-14	Tap bolt M8x15	1
15	G-15	Tie rod	1
16	K1604120000	Steering joint	2
17	K0100120002	M12 Full nut	3
18	K0200120002	M12 Spring washer	2
19	G-19	Switch plate	1
20	G-20	Switch	1
21	G-21	Switch wire	1
22	K1203203024	Throttle control lever	1
23	LM180AT1608Z0	Throttle cable	1
24	G-24	Cable tie	2
25	G-25	Tie rod	1
26	LM180A-0715Z2	Steering adj screw lh	1
27	G-27	Steering adj screw rh	1
28	G-28	M12 Nut lh	1
29	K6031100258	Pin M10x20	2
30	K0300032202	Pin 3.2x20	2
31	G-31	Front axle	1
32	K6000000050	22.3 Bush 2620	6
33	LM180A-0603Z2	Set pin	1
34	K5051022350	Thrust washer	8
35	G-35	Split pin 4x30	1

Section G

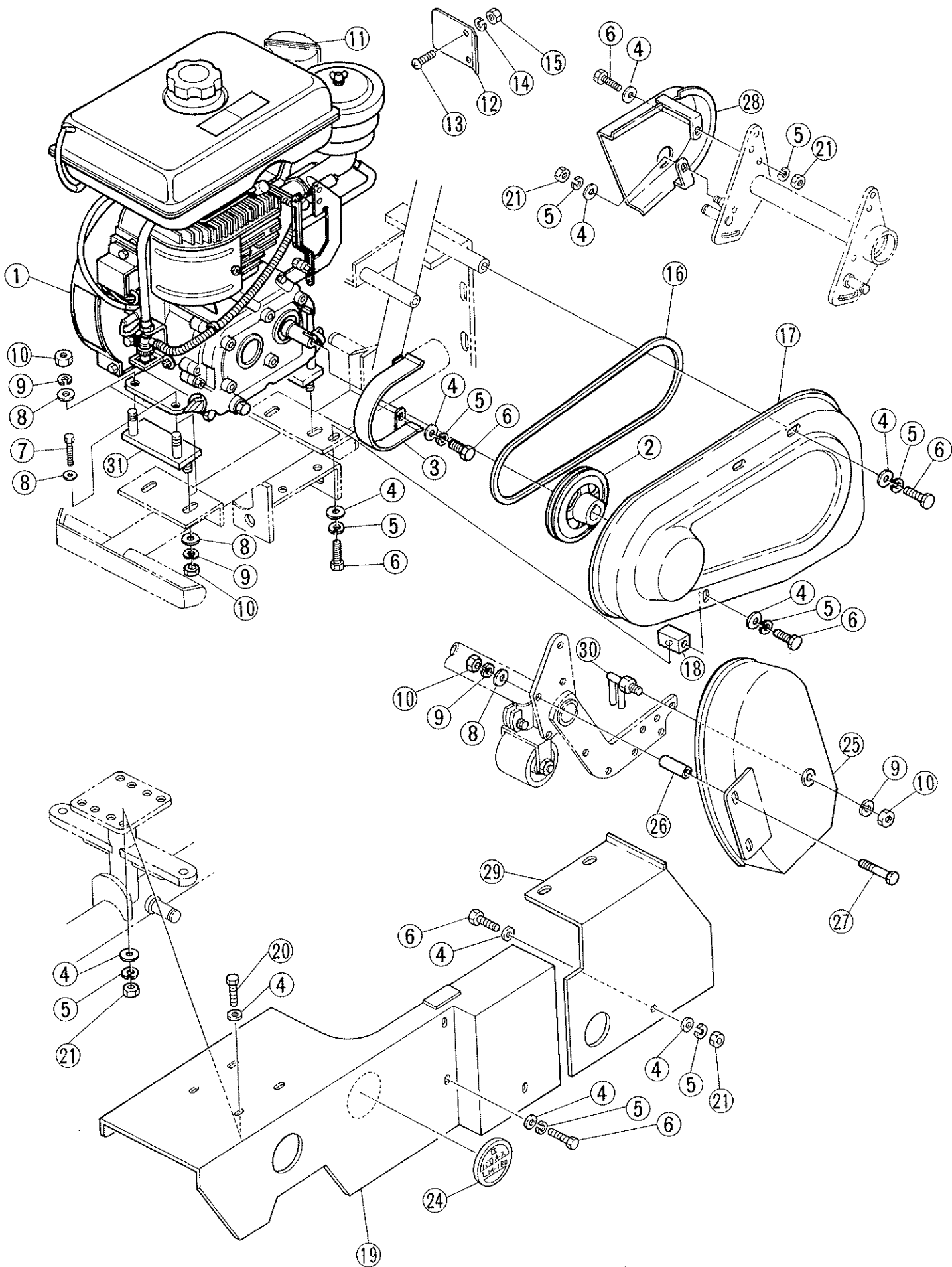
Position	Part No	Description	Qty
36	LM180A-0606Z2	Stub axle lh	1
37	LM180A-0607Z2	Stub axle rh	1
38	G-38	Front wheel 3.50-5	2
39	K2160000072	Front wheel boss	2
40	6204ZZ	Bearing	4
41	G-41	Collar	2
42	K4010132500	Packing washer	4
43	G-43	Cover plate	2
44	G-44	Inner cover plate	2
45	K0000100252	M10x30 Bolt	2
46	K0200100002	M10 Spring washer	2
47	K0007080202	M8x20 Bolt	6
48	K0213080001	M8 Spring washer	6
49	G-49	Dust cover	2
50	G-50	Washer	2
51	G-51	Greaser bolt M12x15	2
52	LM180A-0620ZD	Plate spring	1
53	LM180A-0621Z2	Spring set plate	2
54	K0007080202	M8x20 Bolt	4
55	K0213080001	M8 Spring washer	4
56	K0000100402	M10x40 Bolt	2
57	K0100100002P	M10 Full nut	2

H



Section H

Position	Part No	Description	Qty
1	K2700000040	Transmission MC81GA07	1
2	LM180A-0802Z2	Transmission pulley	1
3	K0500505250	Key 5x5x25	1
4	H-4	M6 Washer (Oversize)	1
5	K0200060002	M6 Spring washer	1
6	K0000060203	M6x20 Bolt	1
7	LM66	Belt	1
8	LM180A-0806A2	Gear change lever	1
9	H-9	Spring pin 5x25	1
10	K1300000030	Grip black	1
11	H-11	Change plate	1
12	H-12	Label	1
13	H-13	Set plate	1
14	K1040000032	Spring	1
15	H-15	Split pin 2.5x15	1
16	H-16	M6 Washer	1
17	H-17	Wheel boss	2
18	K0000100302	M10x30 Bolt	16
19	K0200100002	M10 Spring washer	2
20	No longer available		4
21	LM180A-0837Z0	Wheel set lh (Option)	1
	LM180A-0838Z0	Wheel set rh (Option)	1
22	K0000100202	M10x20 Bolt	16
23	K0200100002	M10 Spring washer	16
24	K604111063B	Pin 11.5x63.5	2
25	K0300032202	Split pin 3.2x20	2
26	K2040000030	Wheel assy 18x8.50-8	2
27	LM180B-0835Z2	Wheel boss	2



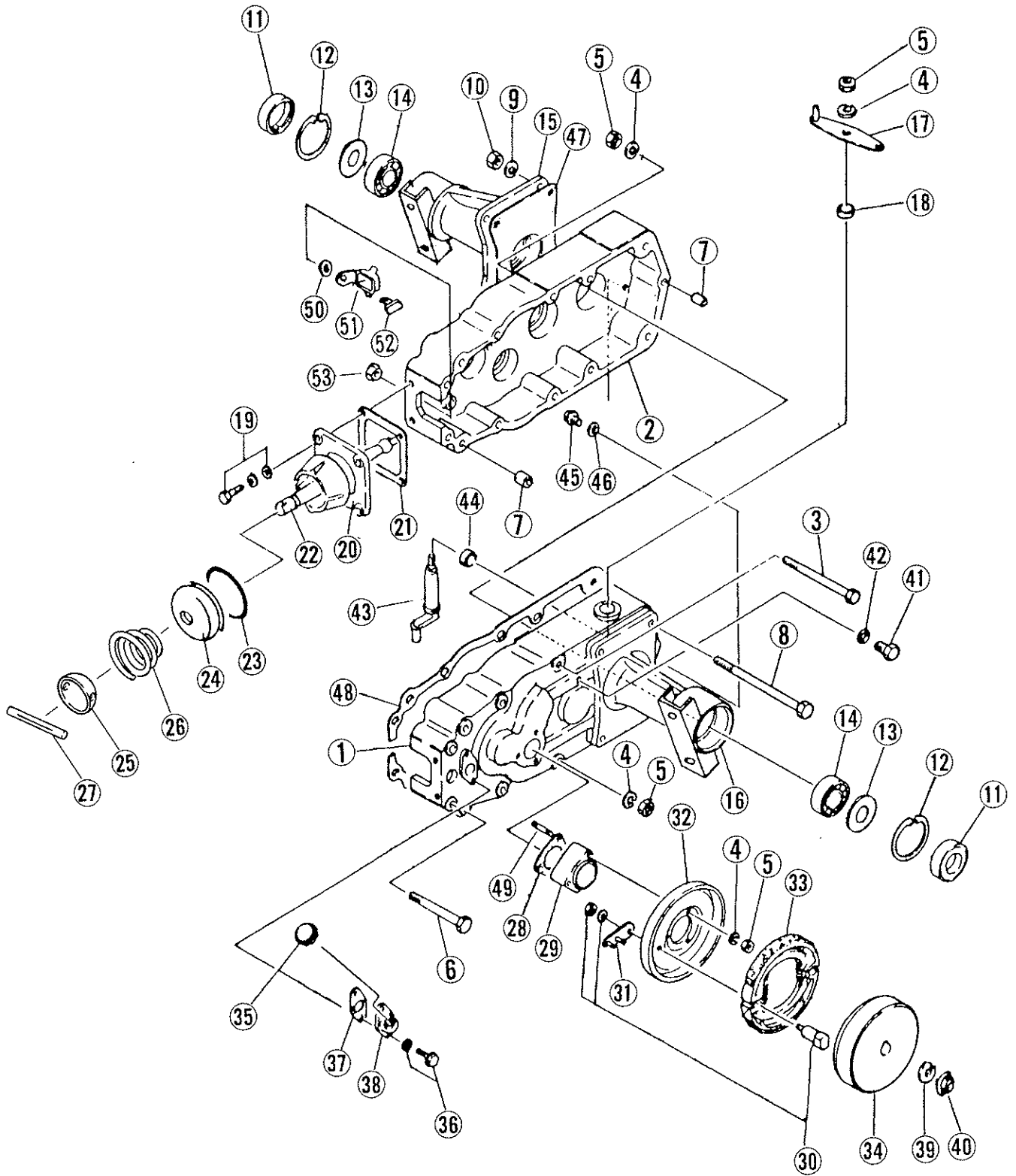
Section I

Position	Part No	Description	Qty
1	See Robin agent	EY35B	1
2	I-2	Engine pulley	1
3	LM180A-1607Z2	Belt retainer	1
4	K5000080002	M8 Washer	20
5	K0213080001	M8 Spring washer	15
6	K0007080202	M8x20 Bolt	10
8	K5000100002	M10 Washer	10
9	K0200100002	M10 Spring washer	11
10	K0100100002P	M10 Full nut	11
11	No longer avail	Filter net	1
12	No longer avail	Exhaust plate	1
13	Standard hardware	M6x10 screw	2
14	K0100100002P	M10 Full nut	2
15	K0100060002	M6 Full nut	2
16	LB47	Belt	1
17	LM180B-1017AR	Belt guard A	1
18	I-18	Set block	1
19	I-19	Belt guard B	1
20	I-20	M8x25 Bolt	4
21	K0100080002P	M8 Full nut	7
24	No longer avail	Decal	1
25	LM180B-1026ZR	Belt guard C	1
26	I-26	Collar	2
27	I-27	M10x100 Bolt	2
28	LM180B-1018ZR	Belt guard D	1
29	I-29	Belt guard E	1
30	LM180A-1025Z2	Scraper	1
31	No longer avail	Engine mounting plate	2

Section K

Position	Part No	Description	Qty
1	K-1	Hand brake bracket	1
2	K-2	Hand brake lever	1
3	K0007080202	M8x20 Bolt	6
4	K0213080001	M8 Washer	6
5	K0100080002P	M8 Full nut	6
6	K-6	Brake cable	1
7	K-7	Adjuster knob	1
8	K1030000022	Spring	1
9	K-9	Cable bracket rod	1
10	K0200100002	M10 Spring washer	1
11	K0100100002P	M10 Full nut	1
12	K5000060003	M6 Washer	1
13	K0100060002	M6 Full nut	1

L



Section L

Position	Part No	Description	Qty
1	2111-803220	Transmission case lh	1
2	2111-803318	Transmission case rh	1
3	0107-081200	M8x120 Bolt	3
4	K0213080001	M8 Spring washer	11
5	K0100080002P	M8 Full nut	11
6	0107-080900	M8x90 Bolt	4
7	2155-401709	Spacer	2
8	2101-404907	M10x160 Bolt	4
9	K0200100002	M10 Spring washer	4
10	K0100100002P	M10 Full nut	4
11	K0860000060	Oil seal 35.72.13	2
12	2101-410209	R72 Retaining clip	2
13	2102-426203	Dust plate	2
14	6207	Bearing	2
15	2310-605108	Axle housing lh	1
16	2310-605009	Axle housing rh	1
17	2340-408713	Diff lock lever	1
18	2104-400401	Oil seal 14.24.8	1
19	K0007080202	M8x20 Bolt	1
20	2440-005700	Gear change assy	1
21	2153-400100	Gasket	1
22	2141-407104	Selector	1
23	2152-404505	Clip	1
24	2105-404606	Rubber cover	1
25	2440-005700	Gear change assy	1
26	2440-005700	Gear change assy	1
27	2440-005700	Gear change assy	1
28	2153-407000	Gasket	1
29	2114-401009	Brake mounting	1
30	2435-000505	Brake activator cam	1
31	2143-403906	Scraper	1
32	2135-600809	Brake back plate	1
33	2435-000406	Brake shoe set	1
34	2135-403501	Brake drum	1
35	2105-404002	Plug G20	1

Section L

Position	Part No	Description	Qty
36	0014-060160	M6x16 Bolt	1
37	2153-404801	Gasket	1
38	2157-401905	Oil port	1
39	0410-140000	M14 Spring washer	1
40	2101-411909	M12 Nut	1
41	2105-400103	Plug M8	1
42	2105-400202	Gasket	1
43	2144-405305	Shifter (diff)	1
44	2103-405407	Seal 15206.5	1
45	2105-400806	Plug	1
46	2105-400905	Gasket	1
47	2153-407307	Gasket	2
48	2153-700509	Gasket	1
49	0176-080503	M8x50 Stud	3
50	2102-408409	Washer	1
51	2340-404001	Guide	1
52	2154-402400	Guide	1
53	K0100080002P	M8 Full nut	1

Section L

Position	Part No	Description	Qty
1	M-1	Axle shaft lh	1
2	M-2	Axle shaft rh	1
3	6206	Bearing	1
4	6206NR	Bearing	1
5	2136-600303	Differential case	1
6	2101-414218	M8x57 Bolt	4
7	2120-401901	Diff bevel gear	2
8	2120-401802	Bevel pinion gear	2
9	M-9	Differential shaft	1
10	0460-050280	Spring pin 5x28	1
11	0452-080160	Pin 8x16	1
12	M-12	Gear L48	1
13	M-13	Clutch	1
14	2132-404501	Splined shaft D	1
15	6204	Bearing	2
16	6304	Bearing	1
17	M-17	Gear K15	1
18	M-18	Gear J54	1
19	2103-412102	Collar 20-25-9	2
20	2132-404402	Splined shaft C	1
21	6303	Bearing	5
22	2103-411907	Collar 17-22.7-7.5	1
23	2122-404009	Gear D43	2
24	0701-201000	Washer	2
25	M-25	Gear S29	2
26	2103-412300	Collar 20-25-34	1
27	M-27	Gear I15	1
28	2133-403415	Input shaft	1
29	0480-050250	Key 5x5x25	1
30	2103-411808	Collar 17-22.7-15.5	1
31	2103-412201	Collar 20-25-7.5	1
32	2122-404108	Gear E33	1
33	2103-411402	Collar 20-25-24	1
34	2122-403309	Gear F28	1
35	2103-412003	Collar 20-25-11.5	1
36	2104-400500	Seal 20.40.7	1
37	0701-172000	Washer	2
38	2122-403804	Gear A16	1

Section L

Position	Part No	Description	Qty
39	2122-403903	Gear BC25-31	1
40	M-40	Splined shaft A	1
41	2104-406809	Seal 17.40.7	1
42	M-42	Shoes	2
43	M-43	Detent spring	2
44	M-44	Shifter fork A	1
45	2144-408108	Shifter fork BC	1
46	2141-400501	Shifter shaft A	2
47	M-47	Detent ball	2

M

