

BARRONESS

Quality on Demand

Technical Information Leaflet

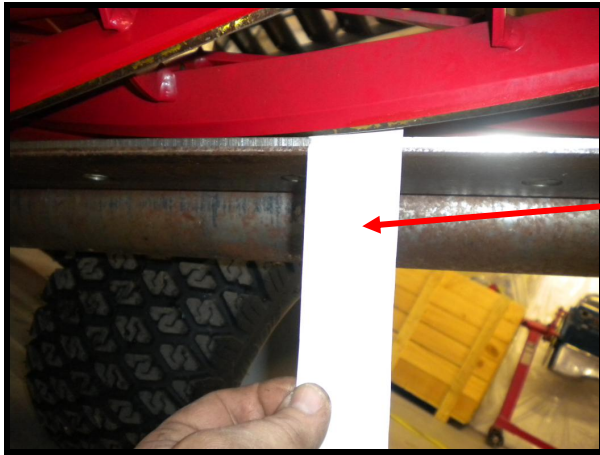
TIL: 022



LM180 Triple Mower
Blade/Cut Adjustment

BARONESS LM180 TRIPLE MOWER – BLADE/CUT ADJUSTMENT

Before commencing any blade adjustments it is important that the cutting units are thoroughly cleaned and dry.

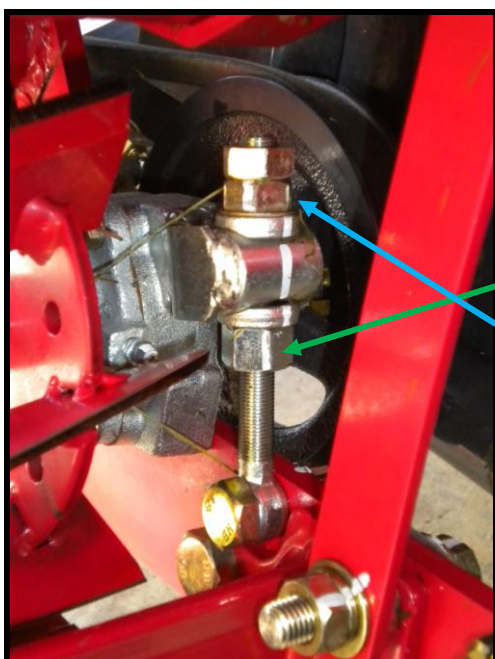
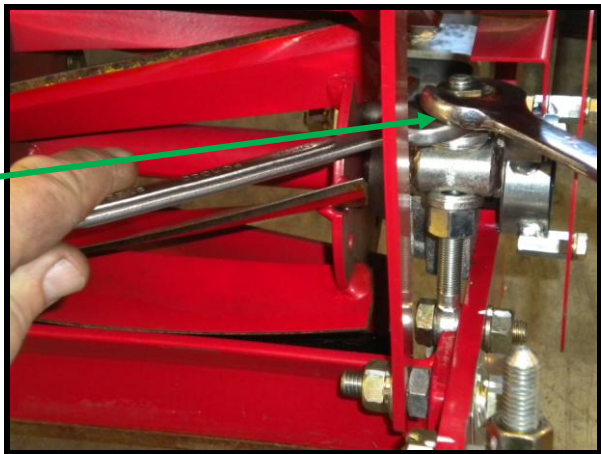


To check that the blades are cutting correctly, use a strip of paper as shown.

With the strip of paper held square to the bottom blade, rotate the cutting cylinder and see if the blades cut the paper. **Never rotate the cutting cylinders using your hands as the blades are very sharp and can cause serious injury. Use a short length of wooden pole to rotate the cylinder.**

If the paper is not cut then you will need to lower the cutting cylinder down onto the bottom blade.

To do this, first of all loosen the top locking nut on the cylinder adjustment mechanism. Repeat this for both sides of the cutting unit.



Once the top locking nut is loosened you need to lower the cylinder down slightly onto the bottom blade.

To do this firstly lower the bottom adjusting nut by turning it clockwise a couple of flats.

Then repeat his exercise with the top nut, turning it clockwise a couple of flats.

This will have the effect of lowering the cutting cylinder.

Repeat this procedure for both ends of the cutting unit.



Check the cut again by using a strip of paper as previously explained. Check both ends of the blades and not just in the middle. **Once again please remember to never put your hand into the cutting cylinder.**

If the paper is still not cut correctly, repeat the blade lowering procedure as described above.

If one end of the cutting cylinder cuts the paper but the other end does not, then only adjust the end that is not cutting, but be aware that this could have an effect on the other end so always check both ends with paper after making any adjustment.

Keep adjusting both ends until the paper is cut right across the length of the bottom blade.

Once the blades are cutting paper right across the length of the bottom blade then you need to check that you do not have excessive blade contact.

To do this you need to use another strip of paper but this time hold it flat along the surface of the bottom blade.

When you rotate the cylinder the paper should not be cut but should just leave an indentation line. If it does this it is set ok. If it cuts the paper then the contact is too great and the blades will need adjusting to provide slightly less contact. This is done by turning the blade adjuster nuts anti-clockwise by a very small amount in order to increase the gap slightly.

Only adjust the side which is too tight. If both sides are too tight then adjust them both but remember to only use very small adjustments and keep checking both sides.

The blades are correctly adjusted when both sides cut paper when it is held square to the bottom blade but only leaves an indentation in the paper when it is held flat along the bottom blade.

