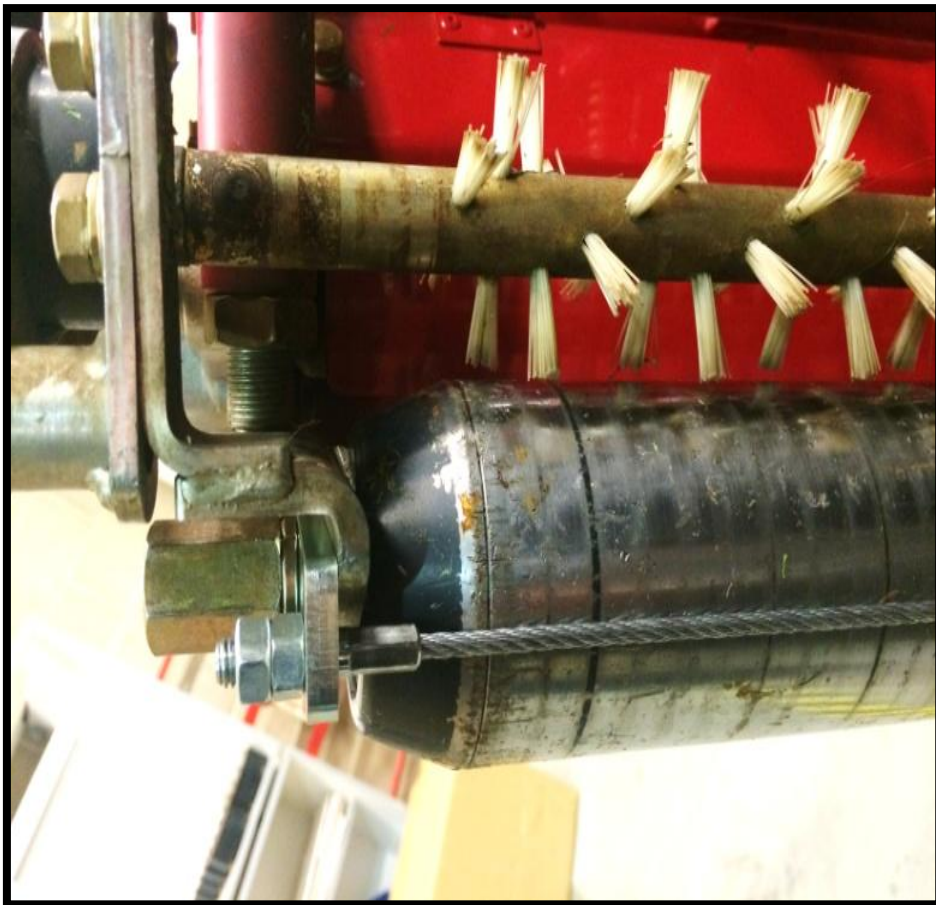


BARONESS

Quality on Demand

Technical Information Leaflet

TIL: 006



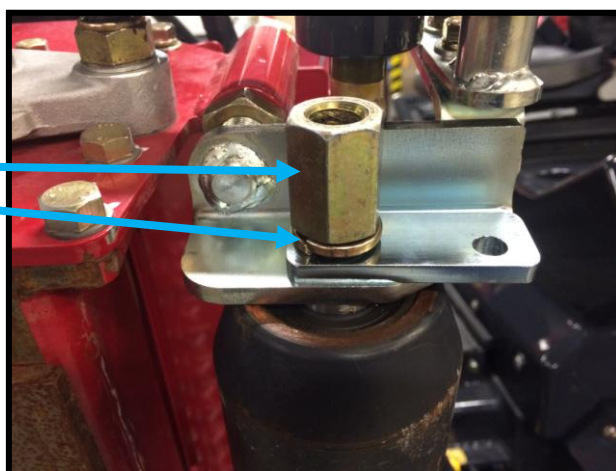
LM2700 Rear Roller Scraper Wires Fitting Instructions

Remove the Rear Roller retaining Nuts and Spring Washers



Place the Scraper Wire bracket over the Rear Roller shaft so that the small hole is at the bottom edge of the bracket and facing towards the rear of the machine.

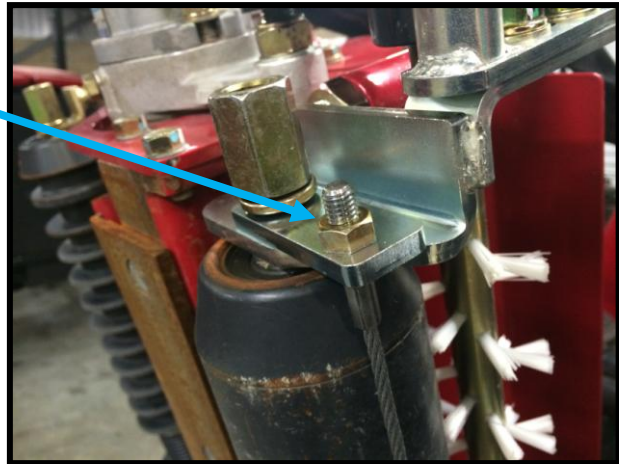
Re-fit the Spring Washer and Rear Roller retaining nut and tighten making sure that the Scraper Bracket remains parallel to the Rear Roller bracket.



Fit the Scraper Wire as shown using one M8 nut at each end.

Tighten the Scraper Wire tension using these M8 nuts whilst keeping the Scraper Wire centralised.

Note: Do not over-tighten the Wire, just have it tight enough so that it stays straight under a small load.



Add a second M8 Nut to the Scraper Wire, locking it to the first Nut in order to stop it from coming undone.