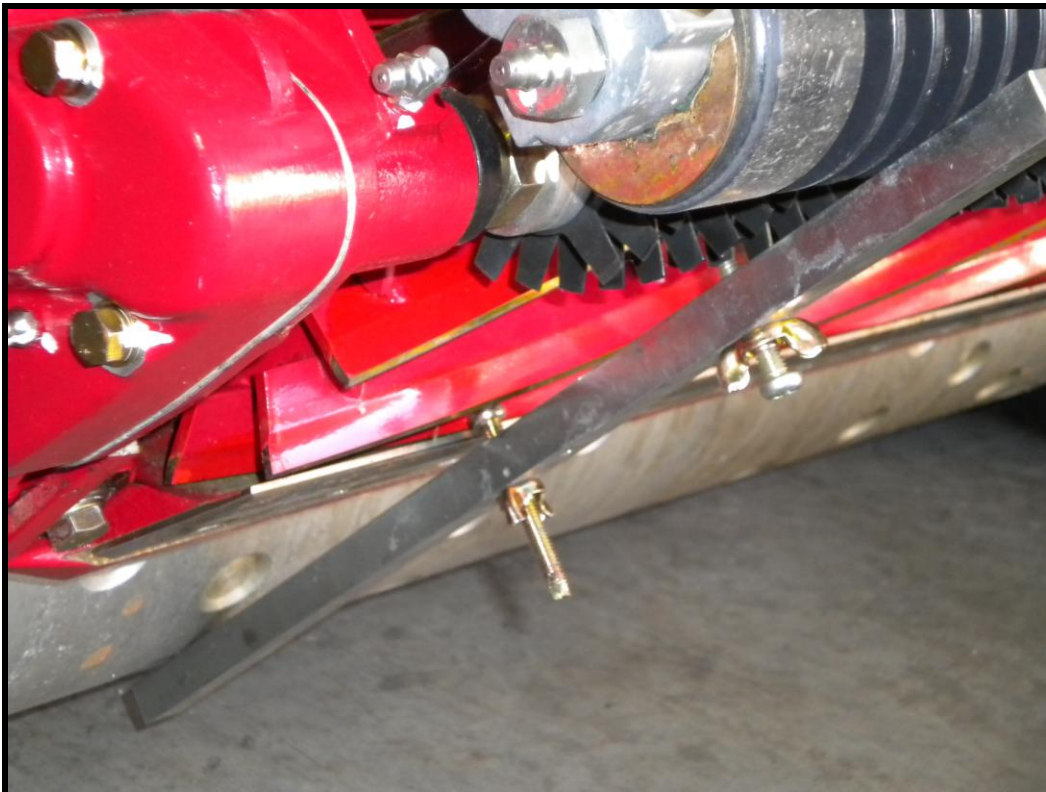


BARRONESS

Quality on Demand

Technical Information Leaflet

TIL: 013



LM56/66

Height of Cut Adjustment

HEIGHT OF CUT ADJUSTMENT

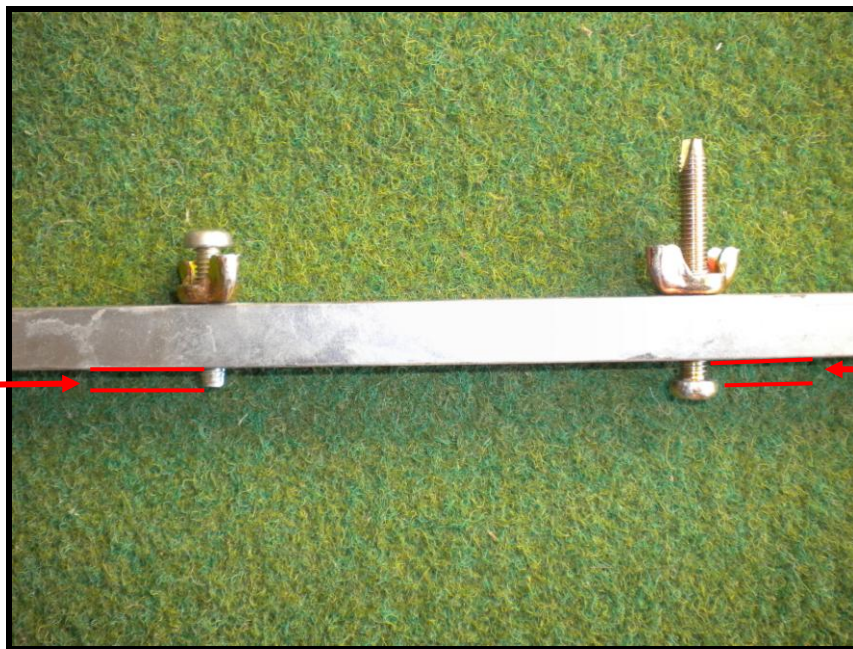
The setting bar for the Baroness LM56/66 range of mowers has two adjusting screws which are used as follows:



Groomer height setting screw. If no groomer is fitted then this screw is not used.

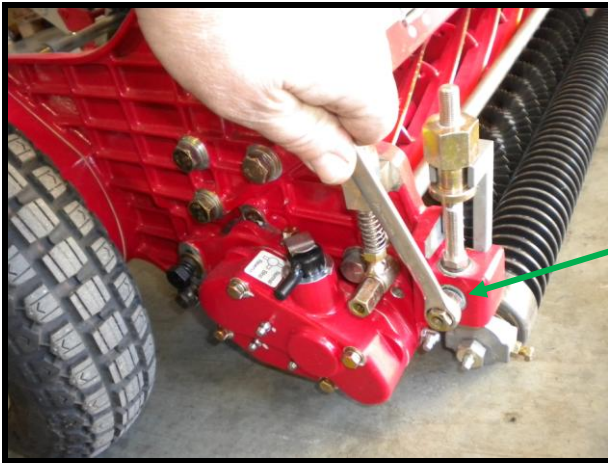
Height of Cut Setting Screw

This setting bar needs to be set as follows:



This end of this screw (as shown) needs to be adjusted so that it measures the same distance as the desired groomer setting.

This screw needs to be adjusted so that the distance between the setting bar and the underside of the head of the screw (as shown) is adjusted so that it measures the same distance as the desired height of cut.



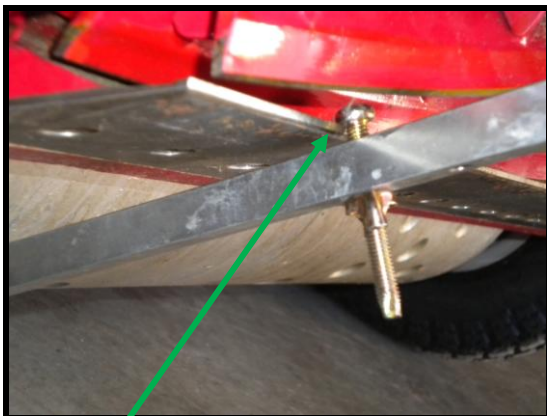
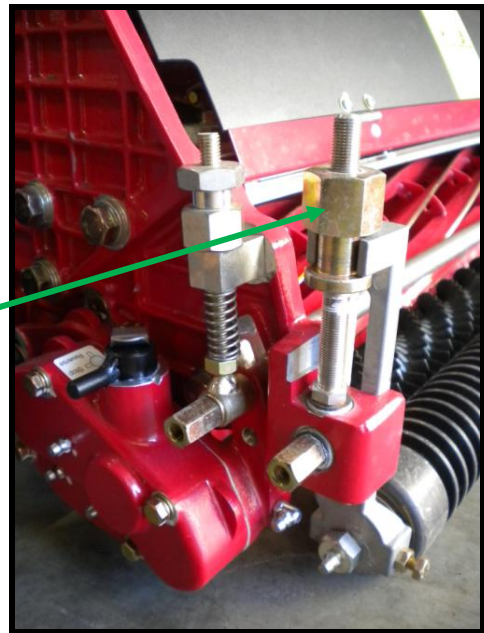
Loosen the height of cut locking nut using a 13mm spanner.

Once it is loose, lightly tighten it by hand so that it is held in place but able to be moved.

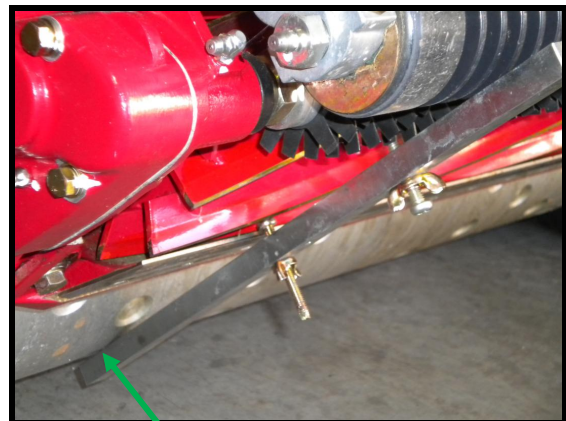
Repeat this on both sides of the machine.

Raise the front roller up by twisting the height of cut adjuster nut anti-clockwise. Make sure that you do this on both sides of the machine by equal amounts.

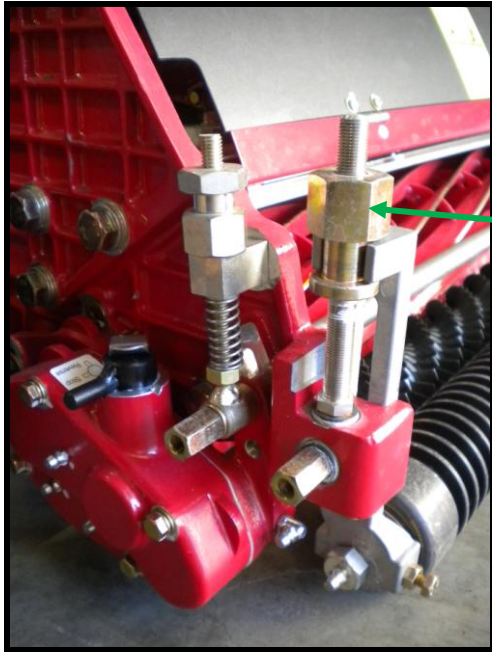
Note: This is only necessary if you are lowering the current height of cut. If you are raising the height of cut you can skip this stage.



With the machine tipped back, fit the setting bar as shown with the underside of the adjusting screw head resting on the cutting edge of the bottom blade.

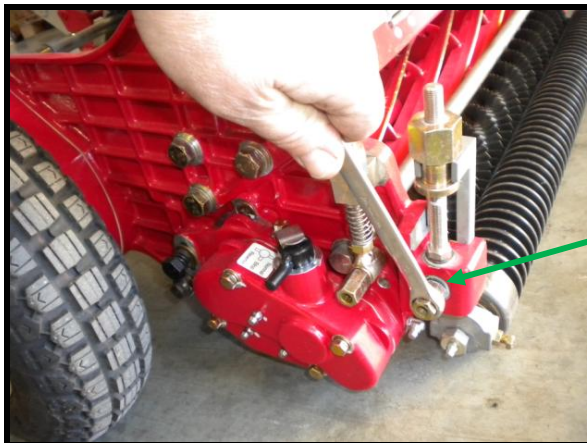


The end closest to the height adjusting screw should be resting on the rear roller as shown.



You now need to adjust the height of the front roller until the correct setting is achieved. To adjust the front roller height, twist this adjusting nut. Twisting it clockwise will lower the roller and twisting it anti-clockwise will raise the roller.

The front roller needs to be adjusted so that with the underside of the adjusting screw head resting on the cutting surface of the bottom blade, the setting bar is touching both the front and rear roller as shown. Make sure that this setting is achieved on both ends of the bottom blade. If the front roller is adjusted correctly you should be able to slide the setting bar out from this position with just a light resistance. If the resistance is too hard then the front roller is down too low. If there is hardly any resistance then the front roller is too high and further small adjustments are needed. Remember to double check both ends several times to ensure uniform adjustment.



Finally tighten the roller adjuster locking nuts. After tightening these, re-check the height of cut to see that nothing has moved. If it has, then re-adjust as necessary.