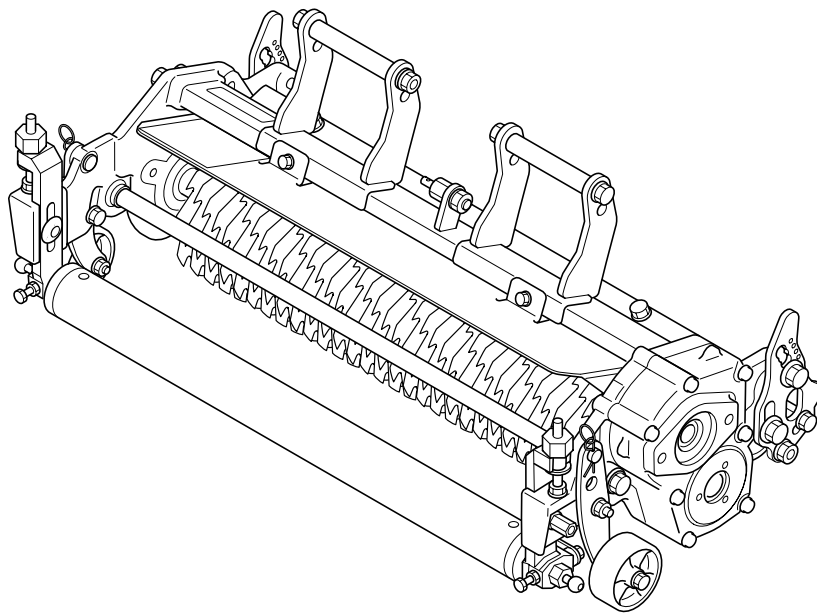


ATR311

Thatching Reel Unit

Parts catalog



BARONESS[®]
Quality on Demand

Serial No. ATR311 : 10001-

Ver.1.0

Greetings

Thank you for purchasing Baroness product.

This brochure contains the information needed for ordering BARONESS parts.

Search the number indicating the figure of your desired part in the illustration area, and find the same number from among the latter parts of the hyphenated Cat Nos. in the listing area to obtain the individual Code No.

Notes

1) For inquiries of parts

Inform us of the model and the serial number of your machine or attachment.

The model and the serial number are indicated on the serial number plate of your machine or attachment.

* Consult the Owner's Operating Manual for the position where the serial number plate is affixed.

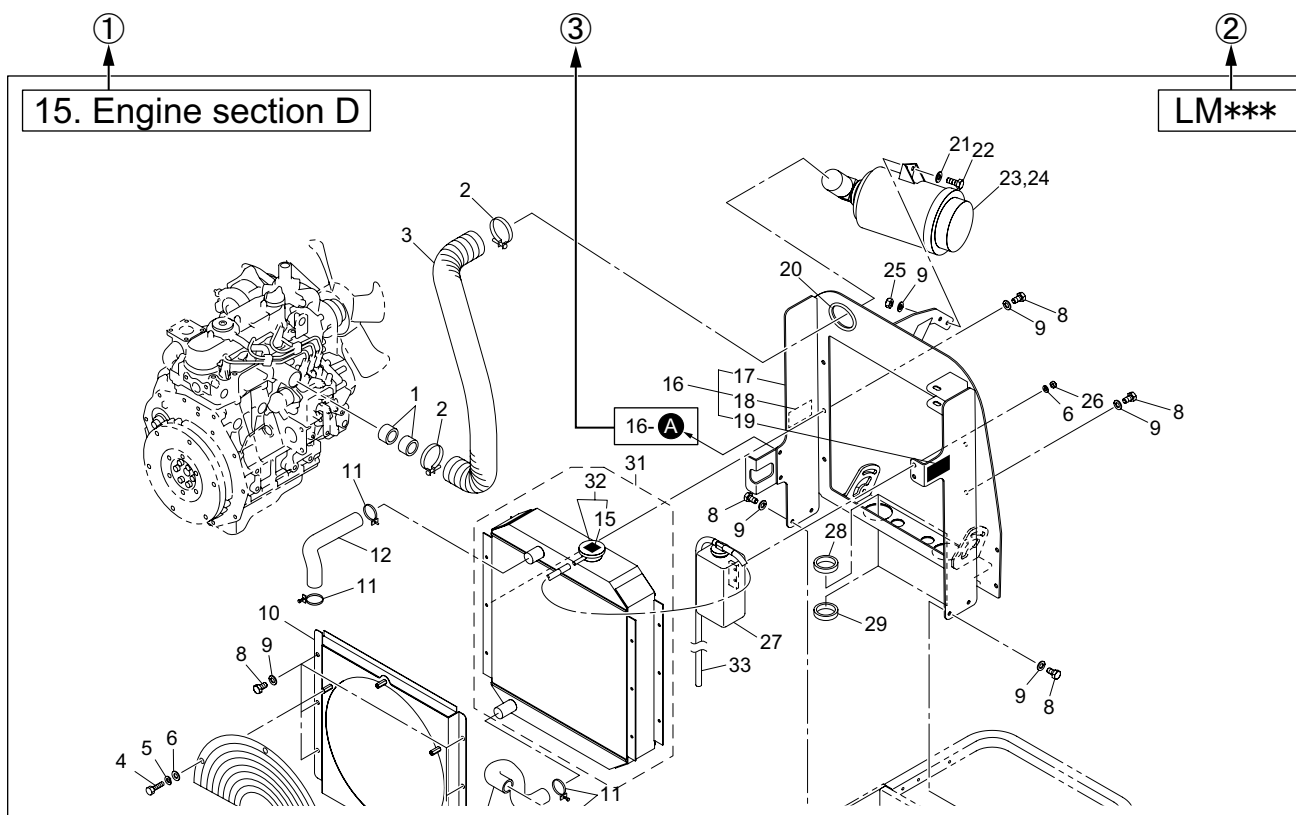
2) For ordering parts

- Inform us of the Code No., Part name and order quantity.
- We do not accept returns unless our company is responsible for the issue.
- Use genuine Baroness parts and accessories. The Baroness product warranty may not apply if parts or accessories from other companies are used.

3) The information described in this brochure is subject to change without prior notice.

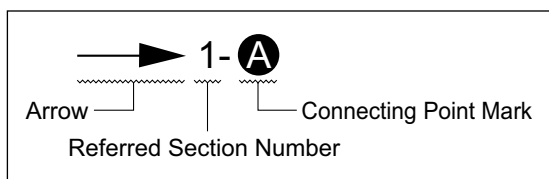
Description of the content of Parts catalog

1) Illustration area



- ① Section No. /Section name
- ② Model
- ③ Indication of the connecting point

The following indication shows the connecting point of the part shown on the other page.



- 1- **A** :
Refer to the point **A** in the illustration of the section No.1
- 2- **B** :
Refer to the point **B** in the illustration of the section No.2

Note :

The figures of assembled components or isolated parts do not always show their accurate shapes. The figures are supposed to be used for obtaining the correct code numbers.

2) Listing area

Cat No.	Code No.	Part name	Qty			Remark	SN of application
1 - 1	K0000080152	BOLT, M8-15	2	2	2		
1 - 2	K0185160002	NUT, LEFT-HANDED P1.5 M16-3	2	2	2		
1 - 3	K3650000100	HOUR METER, HH2AS	1	1	1		10001-10023
1a- 3	K3650000130	HOUR METER, 636DC	1	1	1		10024-
1 - 4	K0100060002	NUT, M6	2	2	2		
1 - 5	K0003080702	BOLT, M8-70	1	1	1		
1 - 7	K0830000020	OIL SEAL, 254210	2	2	2		

① Cat No. or Catalog No.

Find the same number as the number indicating the figure of your desired part in the illustration area from among the latter parts of the hyphenated Cat Nos. to obtain the individual Code No.

② Code No.

Identification code of an individual part

③ Part name

④ Qty

Quantity needed per Cat No.

⑤ Model

When the quantity differs by models, the models are indicated.

⑥ Remark

Specification or description, etc. of the part may be indicated.

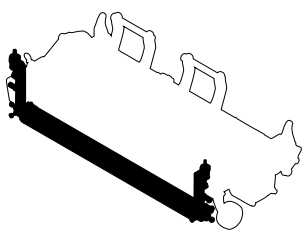
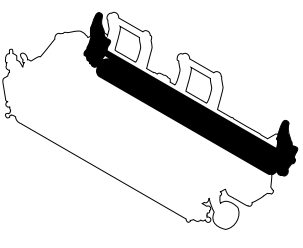
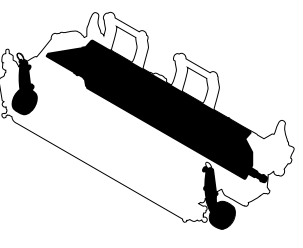
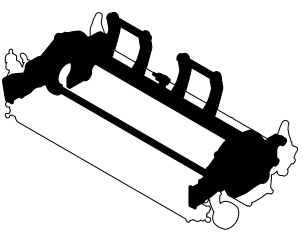
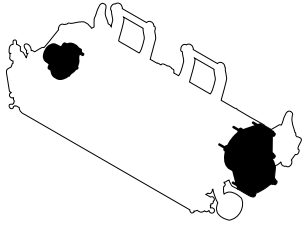
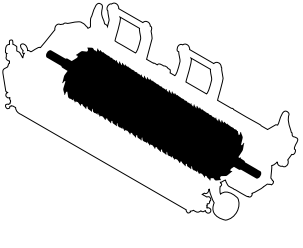
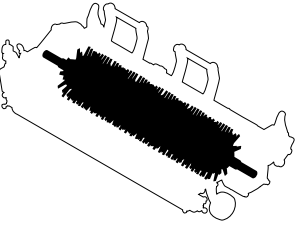
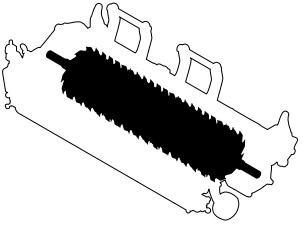
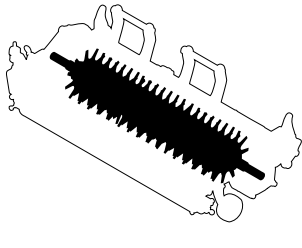
⑦ SN of application

In case of part alteration, the serial number ranges of machines to which the alteration is applied will be indicated.

3) Indication in case of part alteration

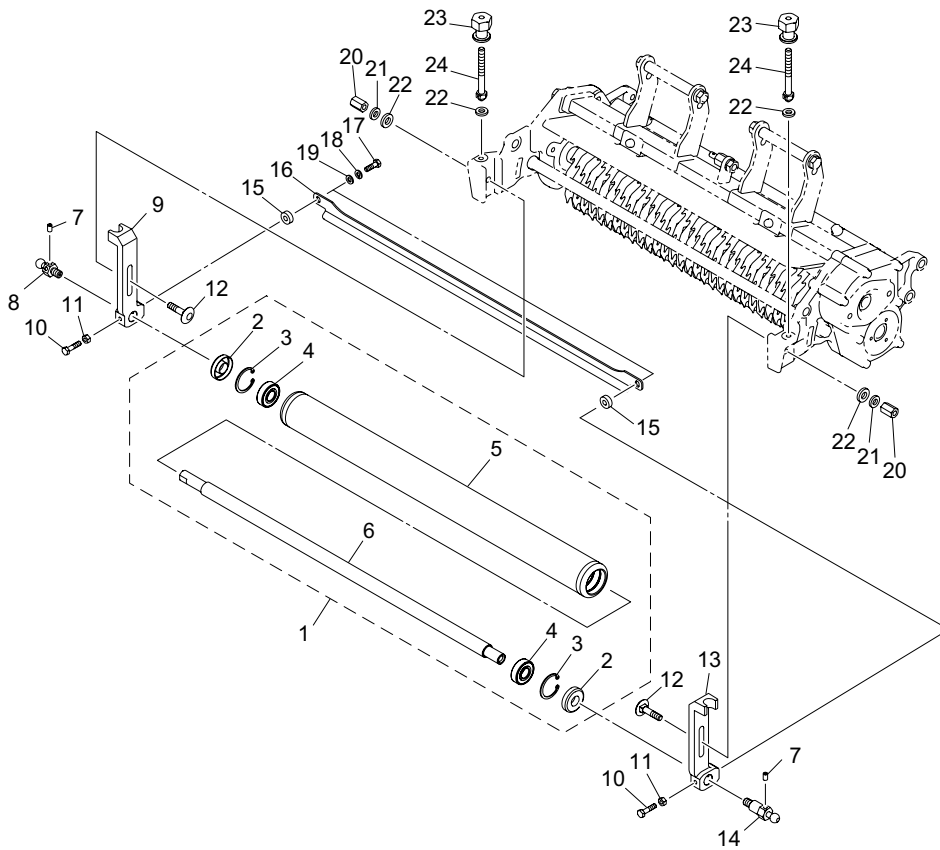
- When a new part and an old one are interchangeable with each other, indication of the old part code No. is discontinued and the new part code No. is solely indicated.
- When a new part and an old one are not interchangeable, the serial number ranges of both machines where the new part is used and those where the old one is used are indicated in the SN of application column.
- When a part is newly added, the serial number range of machines where the part is used is indicated in the SN of application column.
- When a part was previously used but the part is not used in the machine any longer, the serial number range of machines where the part was used is indicated in the SN of application column.

Contents

1. Front roller section.....1 	2. Rear roller section2 	3. Cover section.....3 	4. Frame section.....4 
5. Gear section5 	6. Thatching reel section A for Green6 	7. Thatching reel section B for Green7 	8. Thatching reel section C for Field.....8 
9. Thatching reel section D for Field.....9 	10. Accessories10		

1. Front roller section

ATR311

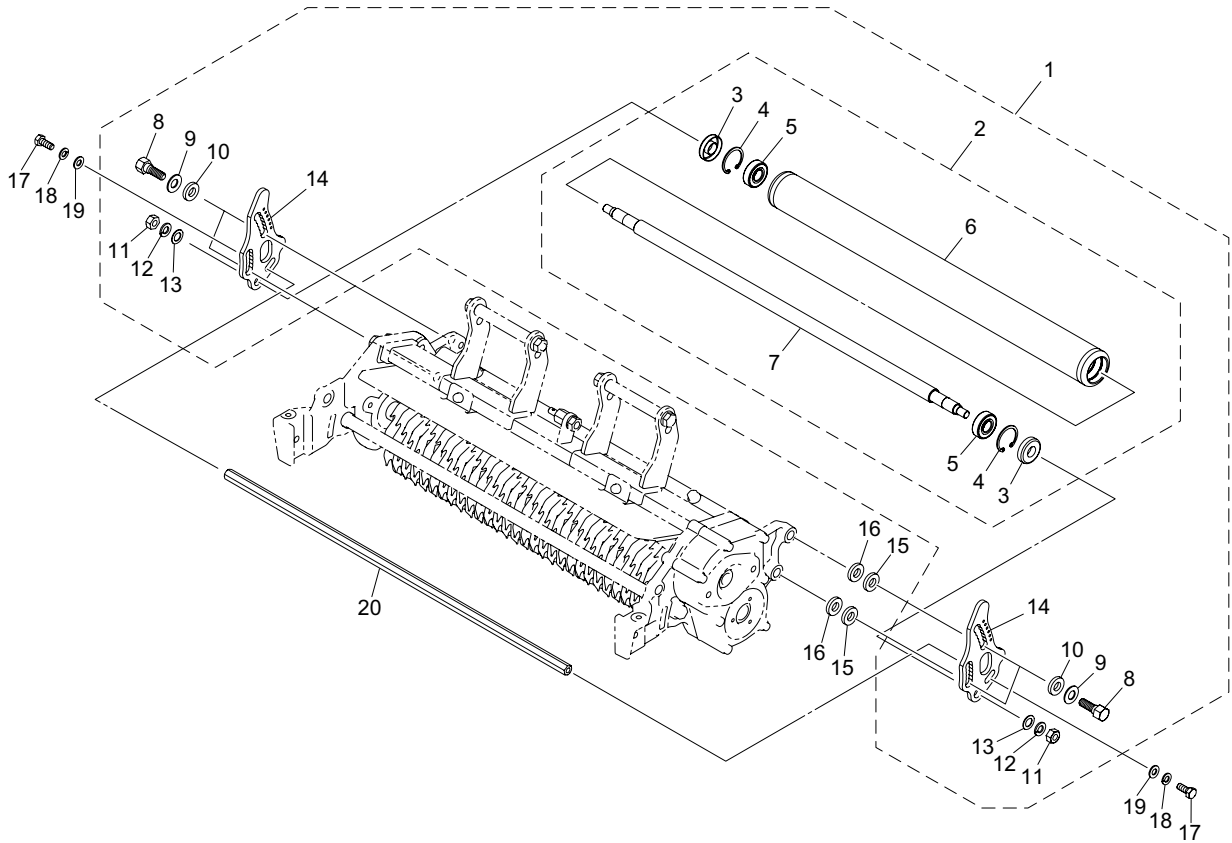


ATR311_001_z00

Cat No.	Code No.	Part name	Qty	Remark	SN of application
1-1	LM311--8813A0	ROLLER COMP, SMOOTH FRONT	1		
1-2	K0851535080	OIL SEAL, PJN15358	2		
1-3	K0402035001	RING, RETAINING R M35	2		
1-4	K0612062020	BEARING, BALL SEAL 2RD 6202	2		
1-5	LM311--5011AD	PIPE, ROLLER	1		
1-6	LM311--8814Z0	SHAFT, ROLLER	1		
1-7	K0028060100	SETSCREW, SUS M6-10	2		
1-8	LM315GA1835Z0	BOLT, SUS MOUNTING MOWER (LH)	1		
1-9	LM315GC3406Z0	BRACKET, ROLLER (RH)	1		
1-10	K0000060252	BOLT, M6-25	2		
1-11	K0100060002	NUT, M6	2		
1-12	K0071001192	BOLT, LARGE HEAD SQUARE ROOT M8-35	2		
1-13	LM315GC3405Z0	BRACKET, ROLLER (LH)	1		
1-14	LM315GA1836Z0	BOLT, SUS MOUNTING MOWER (RH)	1		
1-15	K5076007172	WASHER, SPHC 6-717	2		
1-16	ATR311-0113Z2	SCRAPER, FRONT	1		
1-17	K0000060202	BOLT, M6-20	2		
1-18	K0200060002	WASHER, SPRING M6	2		
1-19	K5000060002	WASHER, M6	2		
1-20	K0149083202	NUT, HIGH M8-13-20	2		
1-21	K5000080002	WASHER, M8	2		
1-22	K0213080002	WASHER, DISK SPRING 1H M8	4		
1-23	LM315GC5034Z2	ADJUSTER, ROLLER	2		
1-24	LM315GC5033Z0	SCREW, ADJUSTING ROLLER	2		

2. Rear roller section

ATR311

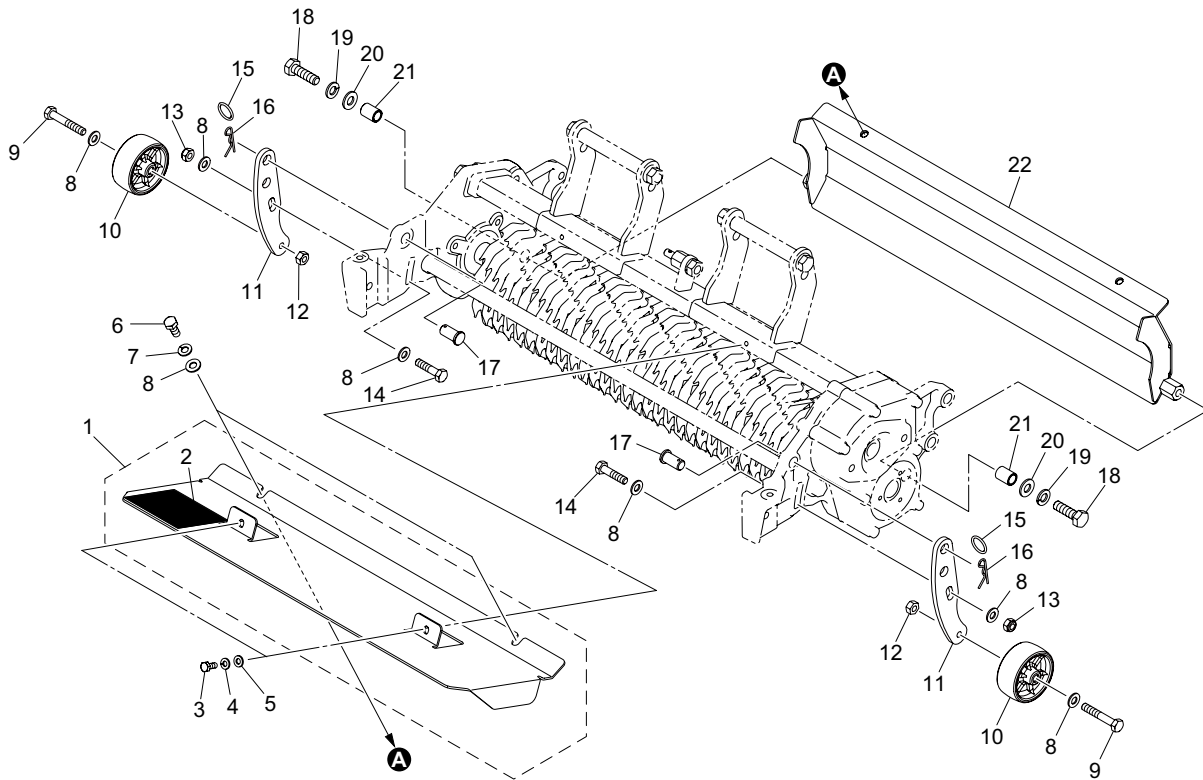


ATR311_002_z00

Cat No.	Code No.	Part name	Qty	Remark	SN of application
2-1	LM311--5025A0	ROLLER ASSY, REAR	1		
2-2	LM311--5032A0	ROLLER COMP, REAR	1		
2-3	K0851535080	OIL SEAL, PJN15358	2		
2-4	K0402035001	RING, RETAINING R M35	2		
2-5	K0612062020	BEARING, BALL SEAL 2RD 6202	2		
2-6	LM311--5011AD	PIPE, ROLLER	1		
2-7	LM311--5012Z0	SHAFT, ROLLER	1		
2-8	LM315GC5024Z2	BOLT, FIXING	4		
2-9	K0211120002	SPRING, CONICAL DISC H M12	4		
2-10	K5000120002	WASHER, M12	4		
2-11	K0108100002	NUT, P1 M10-3	2		
2-12	K0200100002	WASHER, SPRING M10	2		
2-13	K5000100002	WASHER, M10	2		
2-14	LM315GC5023Z2	BRACKET, REAR ROLLER	2		
2-15	K5010412202	WASHER, SPCC 0.4-12-20	0-2	for adjustment	
2-16	K5011012202	WASHER, SPCC 1-12-20	0-2	for adjustment	
2-17	K0000080202	BOLT, M8-20	2		
2-18	K0200080002	WASHER, SPRING M8	2		
2-19	K5000080002	WASHER, M8	2		
2-20	ATR311-0112Z2	SCRAPER, REAR	1		

3. Cover section

ATR311

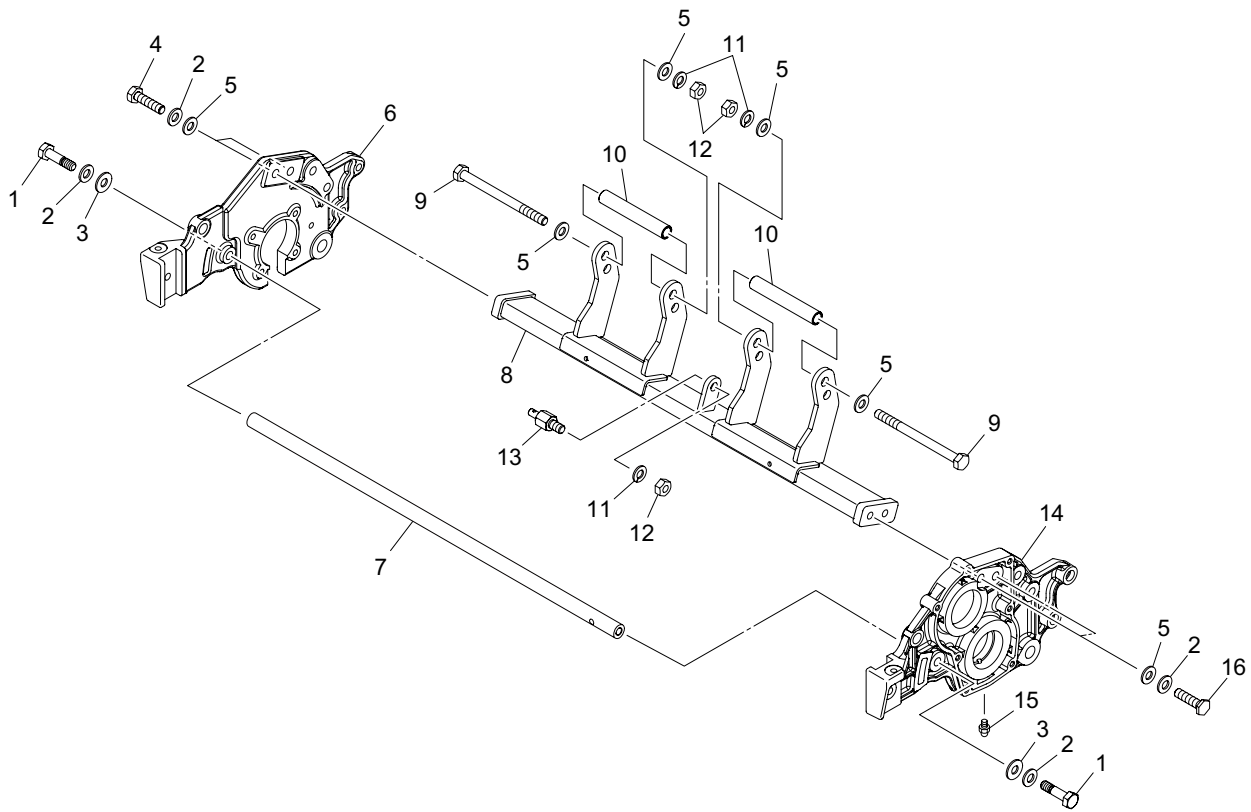


ATR311_003_z00

Cat No.	Code No.	Part name	Qty	Remark	SN of application
3-1	ATR311-0107Z0	COVER COMP (UPPER)	1		
3-2	K4205001600	DECAL, CAUTION CUTTING HANDS/FEET	1		
3-3	K0000060152	BOLT, M6-15	2		
3-4	K0200060002	WASHER, SPRING M6	2		
3-5	K5000060002	WASHER, M6	2		
3-6	K0000080202	BOLT, M8-20	2		
3-7	K0200080002	WASHER, SPRING M8	2		
3-8	K5000080002	WASHER, M8	8		
3-9	K0000080502	BOLT, M8-50	2		
3-10	K2140000040	WHEEL, NYLON, 449G	2		
3-11	ATR311-0111Z2	BRACKET, ROLLER	2		
3-12	K0100080002	NUT, M8	2		
3-13	K0144080002	NUT, W/F-RING M8	2		
3-14	K0000080352	BOLT, M8-35	2		
3-15	K0880018000	O-RING, P18	2		
3-16	K0331000008	PIN, SNAP M10	2		
3-17	K6030120242	PIN, FLAT HEAD M12-24	2		
3-18	K0000100352	BOLT, M10-35	2		
3-19	K0200100002	WASHER, SPRING M10	2		
3-20	K5000100002	WASHER, M10	2		
3-21	ATR311-0110Z2	COLLAR, 11-14.820	2		
3-22	ATR311-0109ZR	COVER (LOWER)	1		

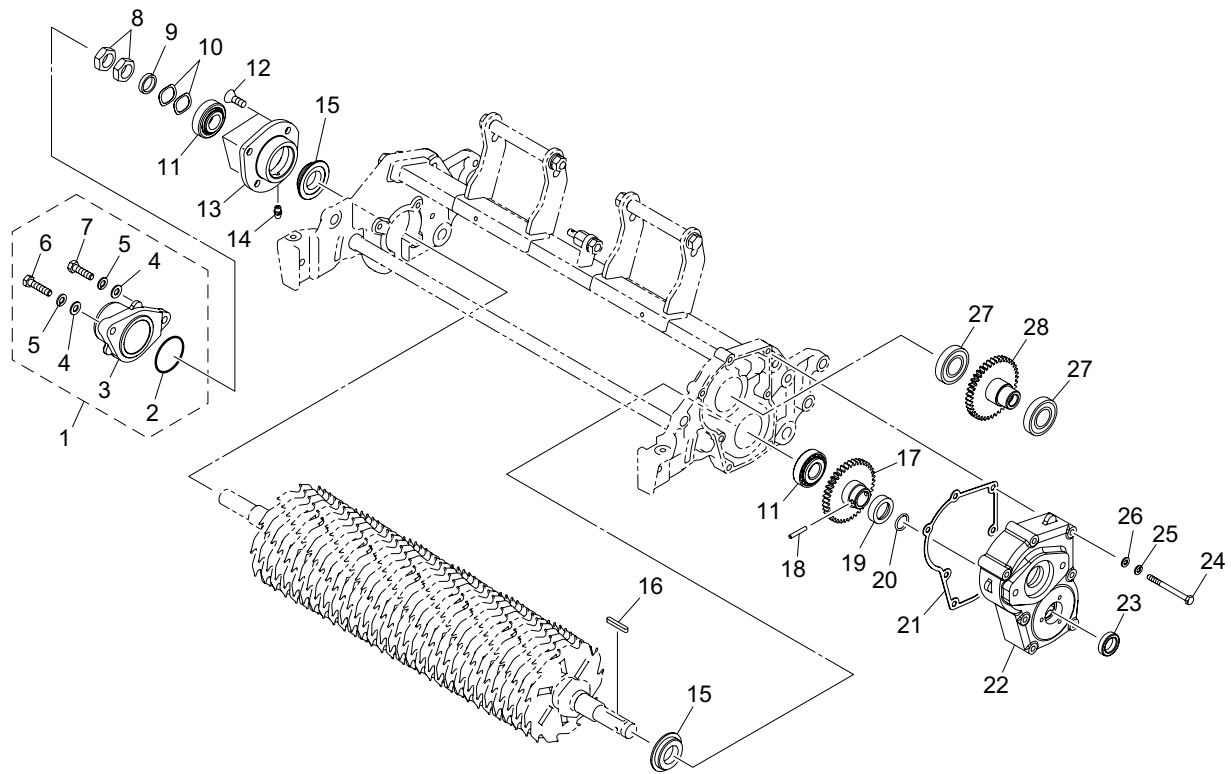
4. Frame section

ATR311



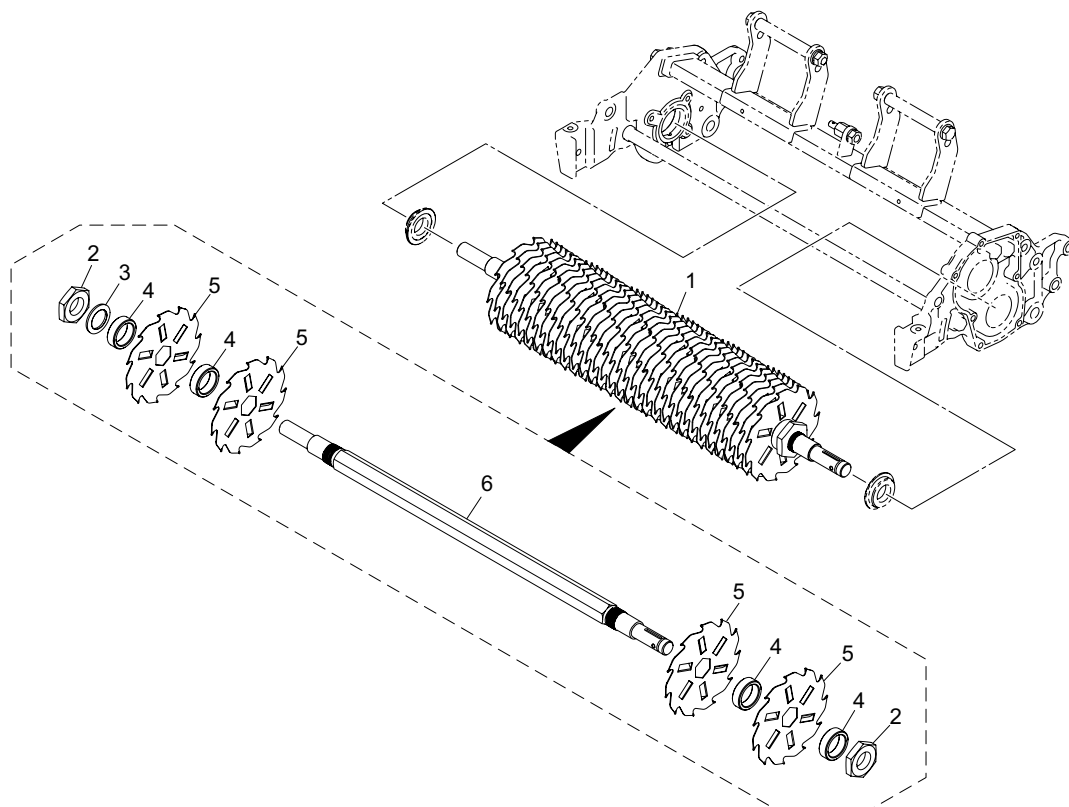
ATR311_004_z00

Cat No.	Code No.	Part name	Qty	Remark	SN of application
4-1	K0071000592	BOLT, POSITIONING M10-40	2		
4-2	K0213100002	WASHER, DISK SPRING 1H M10	6		
4-3	K5001100002	WASHER, M10-24	2		
4-4	K0000100402	BOLT, M10-40	2		
4-5	K5000100002	WASHER, M10	8		
4-6	LM315GC5003ZR	FRAME, (RH)	1		
4-7	LM315GA1819B2	STAY, FRONT	1		
4-8	LM311--5007ZR	STAY, MIDDLE	1		
4-9	K0003101302	BOLT, M10-130	2		
4-10	LM311--5006Z2	COLLAR, STKM 11.9-15.9-100	2		
4-11	K0200100002	WASHER, SPRING M10	3		
4-12	K0100100002	NUT, M10	3		
4-13	LM54G--0614Z3	BOLT, HOLDING CHAIN	1		
4-14	LM311--5001ZR	FRAME, (LH)	1		
4-15	K1440000010	GREASE NIPPLE, STRAIGHT TYPE A	1		
4-16	K0071001032	BOLT, SPECIAL M10-40	2		



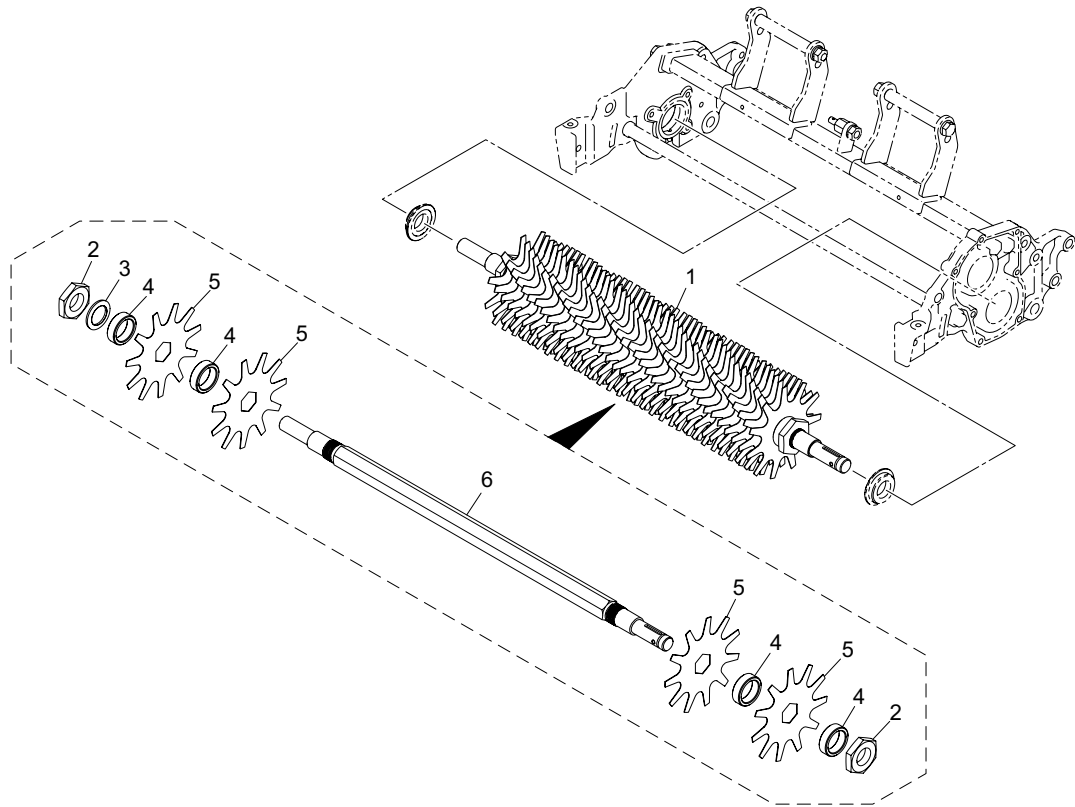
ATR311_005_z00

Cat No.	Code No.	Part name	Qty	Remark	SN of application
5-1	LM315GC5027Z0	PARTS KIT, MODIFYING TO W/O GROOMER	1		
5-2	K0882045000	O-RING, G45	1		
5-3	LM315GB2019Z2	COVER, REEL SHAFT	1		
5-4	K5000080002	WASHER, M8	2		
5-5	K0200080002	WASHER, SPRING M8	2		
5-6	K0000080352	BOLT, M8-35	1		
5-7	K0000080302	BOLT, M8-30	1		
5-8	K0160000132	NUT, SMALL P1.5 M20-10	2		
5-9	K6212001212	COLLAR, STKM M20.2-25.4-5	1		
5-10	K0224000011	WASHER, WAVE M20-0.35	2		
5-11	K0631302040	BEARING, TAPER ROLLER JRP6 30204	2		
5-12	K0053080202	BOLT, FLAT HEAD W/HEX. HOLE M8-20	3		
5-13	LM315GB2013A2	HOUSING, REEL (RH)	1		
5-14	K1440000010	GREASE NIPPLE, STRAIGHT TYPE A	1		
5-15	K0830000020	OIL SEAL, 254210	2		
5-16	K0500404280	KEY, BOTH ROUND M4-428	1		
5-17	LM315GB2004Z0	GEAR, REEL 40-TEETH	1		
5-18	K6051045280	PIN, STRAIGHT HT 4.5-28	1		
5-19	K5300000282	COVER, FOR PIN LOCK	1		
5-20	K0880018000	O-RING, P18	1		
5-21	LM311--5004Z0	PACKING, COVER	1		
5-22	LM311--5002ZR	COVER	1		
5-23	K0822030070	OIL SEAL, MHSA20307	1		
5-24	K0000060702	BOLT, M6-70	7		
5-25	K0200060002	WASHER, SPRING M6	7		
5-26	K5000060002	WASHER, M6	7		
5-27	K0608060050	BEARING, BALL SEAL 2RS 6005	2		
5-28	LM311--5003Z0	GEAR, 40 TEETH	1		



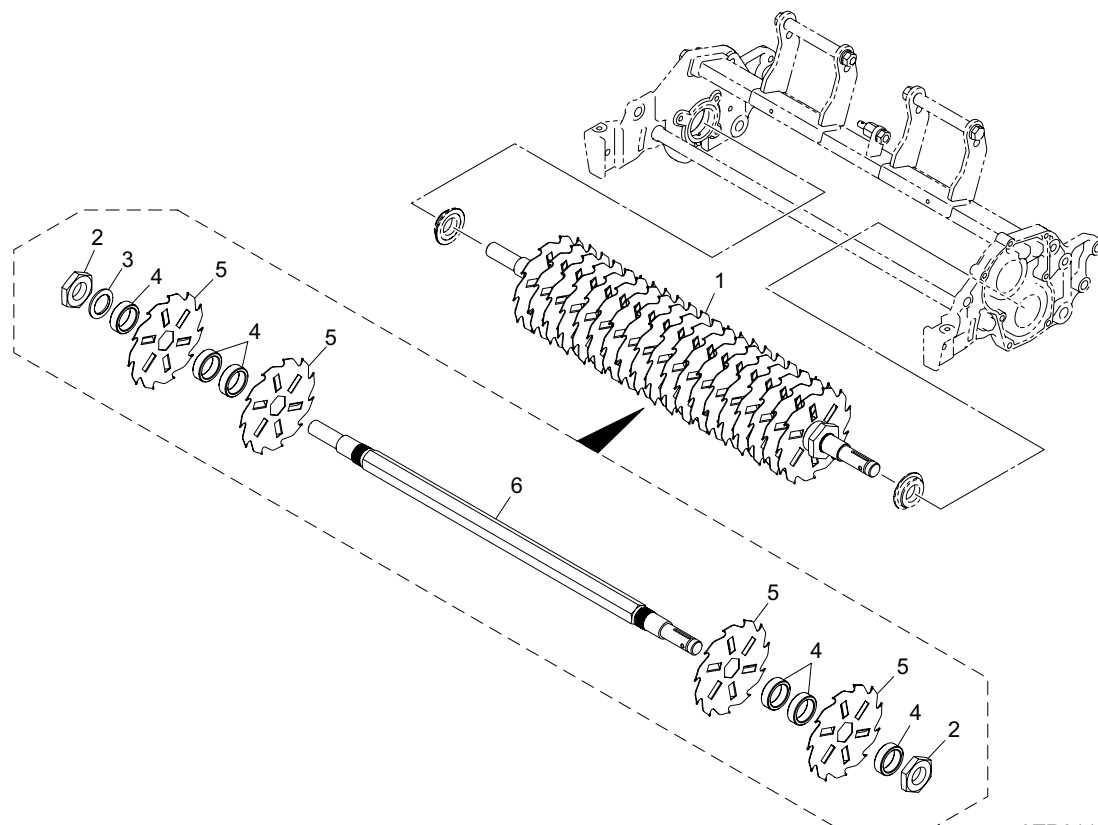
ATR311_006_z00

Cat No.	Code No.	Part name	Qty	Remark	SN of application
6-1	ATR311-0103Z0	DE-THATCHING REEL ASSY, FOR G,W_C	1	with tips	
6-2	K0160000592	NUT, SPECIAL P1.5 M27	2		
6-3	K0214270002	WASHER, DISK SPRING 2L M27	1		
6-4	K6212001172	COLLAR, STKM M31.7-42-13	36		
6-5	K2570000100	BLADE, TIPPED THATCHING 1.2-138	35		
6-6	ATR311-0104Z2	SHAFT, DE-THATCHING REEL	1		



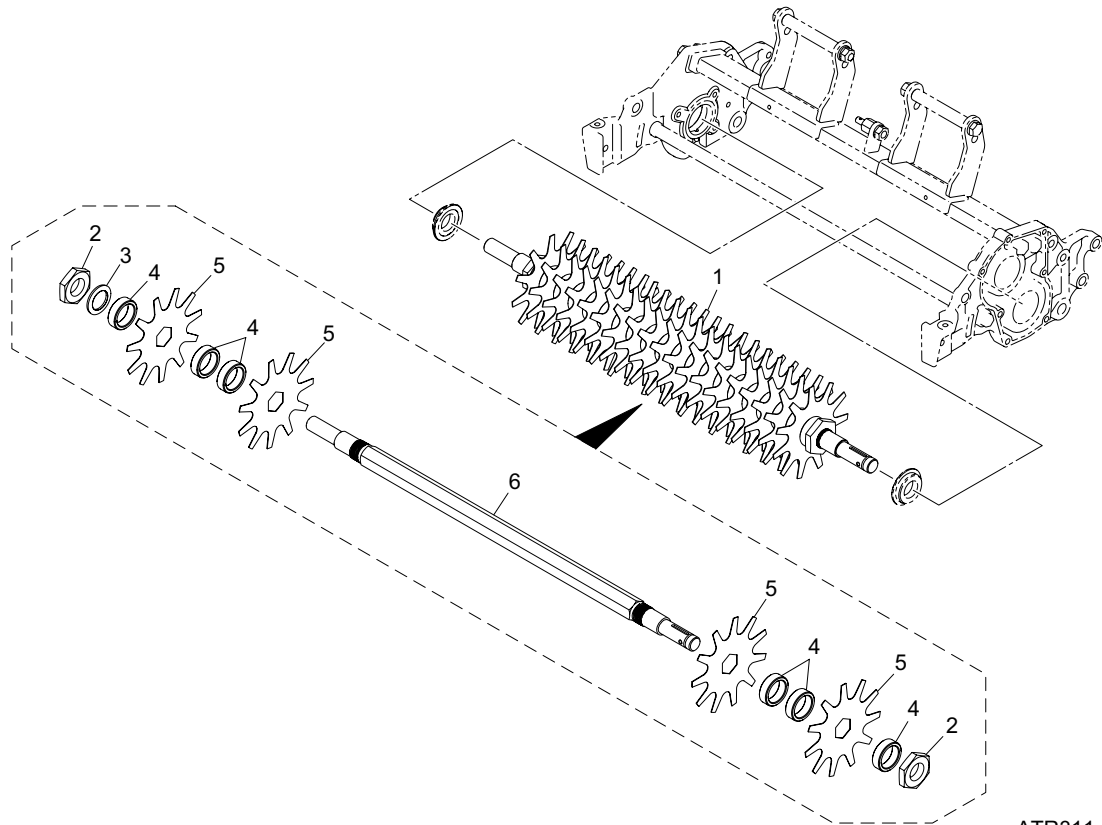
ATR311_007_z00

Cat No.	Code No.	Part name	Qty	Remark	SN of application
7-1	ATR311-0303Z0	DE-THATCHING REEL ASSY, FOR G,WO_C	1	without tips	
7-2	K0160000592	NUT, SPECIAL P1.5 M27	2		
7-3	K0214270002	WASHER, DISK SPRING 2L M27	1		
7-4	K6212001172	COLLAR, STKM M31.7-42-13	37		
7-5	LM150V-1327Z9	BLADE, DETHATCHING 138 M/M	36		
7-6	ATR311-0104Z2	SHAFT, DE-THATCHING REEL	1		



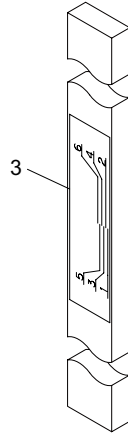
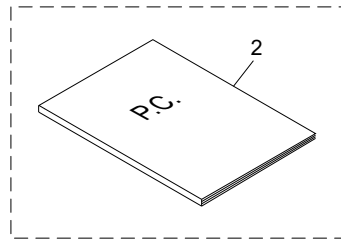
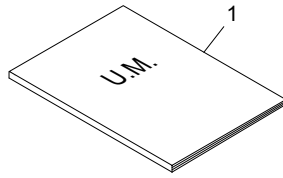
ATR311_008_z00

Cat No.	Code No.	Part name	Qty	Remark	SN of application
8-1	ATR311-0203Z0	DE-THATCHING REEL ASSY, FOR F,W_C	1	with tips	
8-2	K0160000592	NUT, SPECIAL P1.5 M27	2		
8-3	K0214270002	WASHER, DISK SPRING 2L M27	1		
8-4	K6212001172	COLLAR, STKM M31.7-42-13	38		
8-5	K2570000100	BLADE, TIPPED THATCHING 1.2-138	19		
8-6	ATR311-0104Z2	SHAFT, DE-THATCHING REEL	1		



ATR311_009_z00

Cat No.	Code No.	Part name	Qty	Remark	SN of application
9-1	ATR311-0403Z0	DE-THATCHING REEL ASSY, FOR F,WO_C	1	without tips	
9-2	K0160000592	NUT, SPECIAL P1.5 M27	2		
9-3	K0214270002	WASHER, DISK SPRING 2L M27	1		
9-4	K6212001172	COLLAR, STKM M31.7-42-13	38		
9-5	LM150V-1327Z9	BLADE, DETHATCHING 138 M/M	19		
9-6	ATR311-0104Z2	SHAFT, DE-THATCHING REEL	1		



ATR311_010_z00

Cat No.	Code No.	Part name	Qty	Remark	SN of application
10a-1	ATR311--UM--00Z	O-MANUAL, ATR311 JP-EN	1	Available for sale	
10a-2	ATR311---PC--00Z	P-CATALOG, ATR311 JP-EN	1		
10-3	VM66---5002Z0	GAGE, DEPTH	1		

BARONESS[®]
Quality on Demand

 **KYOEISHA CO., LTD.**
Head Office 1-26, Miyuki-cho, Toyokawa-city, Tel :+81-533-84-1390
Aichi-pref, 442-8530 JAPAN Fax :+81-533-84-1220