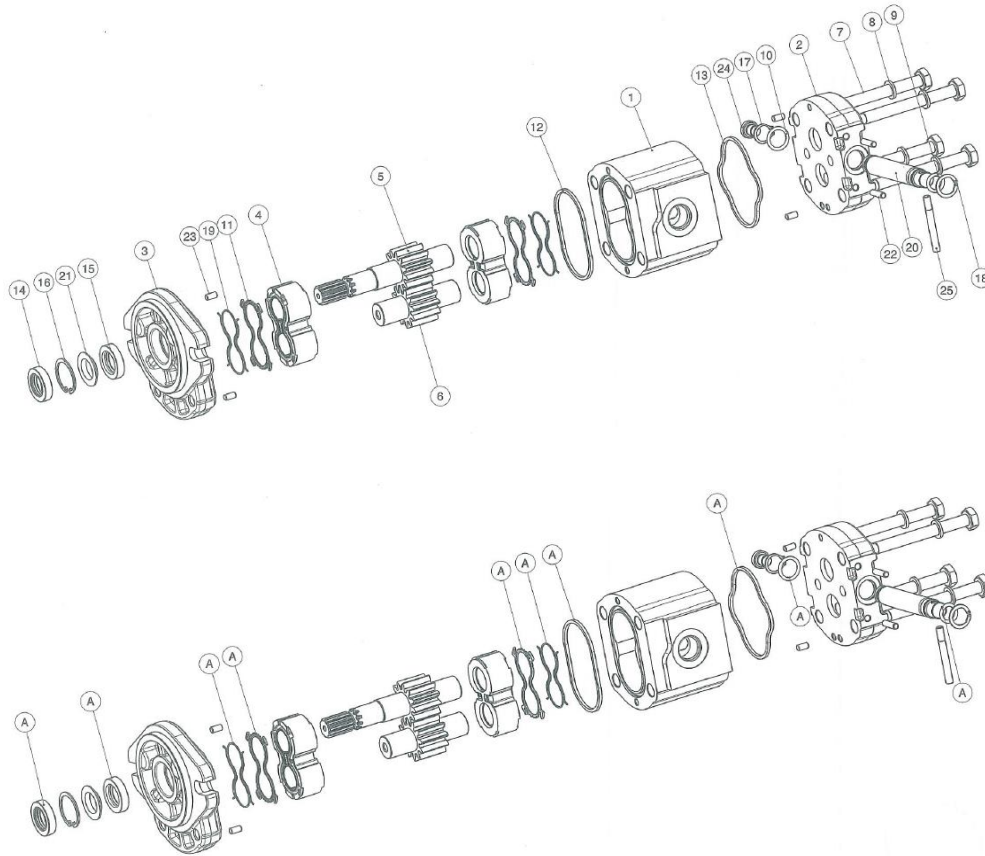


K3582000060 LM331 - LM2700 from S/N 10864, LM3210 and LM3210A (F)



catalog No.	code No.	part name	Quantity
A	62029050	SEALS KIT PLM20-01S9 R(KYO)	1
1	17000400	BODY PL20.16-LJD/JD(L101)(KYO)(INT TOLL) (SCAR)(COLD ROLLED) F.TIR	1
2	21600195	REAR COVER PL20-L *JB FEZN7A(KYO)(1)(FINISHED)	1
3	21911148	FRONT COVER PL20-S9/AL(30)(DHI)	1
4	25930264	THRUST PLATE PL20 R QW DH(PEER)	2
5	27721148	DRIVE SHAFT K-PL20.16-01	1
6	27750050	DRIVEN GEAR F-K-PL20.16	1
7	36595130	SCREW TE M 10 × 115-5737-10.9 GEOMET 321/A PLUSM	4
8	37583716	WASHER 10(10,5 × 16 × 2) HV300 GEOMET 321/A	4
9	38879990	O-RING SEAL PH 5-615 90GRA SH.A(11.91 × 2.62)	1
10	38879995	O-RING SEAL PH 2-114 90GRA SH.A(15.54 × 2.62)	1
11	39656112	SEAL PL20 R N T.N.	2
12	39666195	STANDARD SEAL PL 20 SQUARE SECTION	1
13	39666210	SEAL PL 20 S7 SQUARE SECTION(KBT)	1
14	39700000	SHAFT SEAL BABSL 18 × 30 × 7	1
15	39800000	SHAFT SEAL BAU2 18 × 30 × 7	1
16	40661000	RING 30 UNI 7437-DIN 472	1
17	40977000	RING 15 UNI 7435-DIN 471	1
18	41265025	RING A 16 × 1 V	1
19	41387112	ANTIEXTRUSION Z PL20 R T.N.	2
20	41461007	SPOOL BY-PASS (KYO)(3)(NICKEL PLATED)	1
21	45620000	BACK-UP WASHER GR.2	1
22	49250020	DOWEL PIN MM.5 × 20 ISO 2338-B H8(INOX)	2
23	49270000	DOWEL PIN MM.5 × 10 UNI1707 H8	4
24	49468000	STEEL PLUG TCEI G1/8 WITH OR 9.25 × 1.78	1
25	50380004	SPOOL OPERATING LEVER BY-PASS (NICKEL PLATED)(KYO)	1